

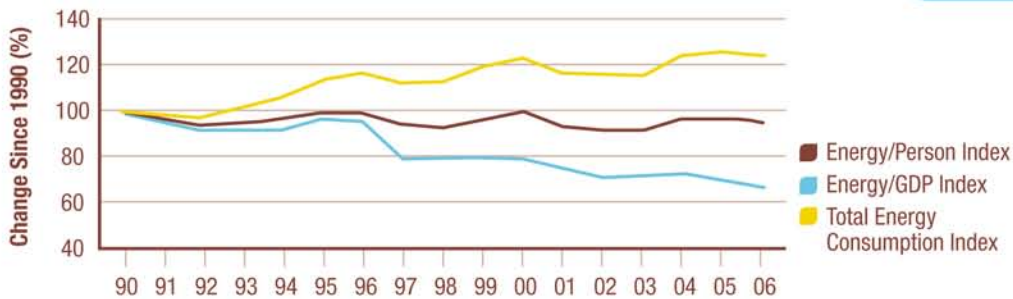
Consumption & Waste

The amount of resources that we use needs to be in balance with what the environment can provide.



ENERGY USE

Energy Consumption and Intensity Trends in BC (1990–2006)



◀ Total energy use increased in B.C. but energy use per person and per unit of GDP became more efficient between 1990 and 2006.



SUSTAINABILITY IN ACTION

Whistler's Integrated Community Sustainability Plan, Whistler2020, is advancing strategies that tackle climate change through action.

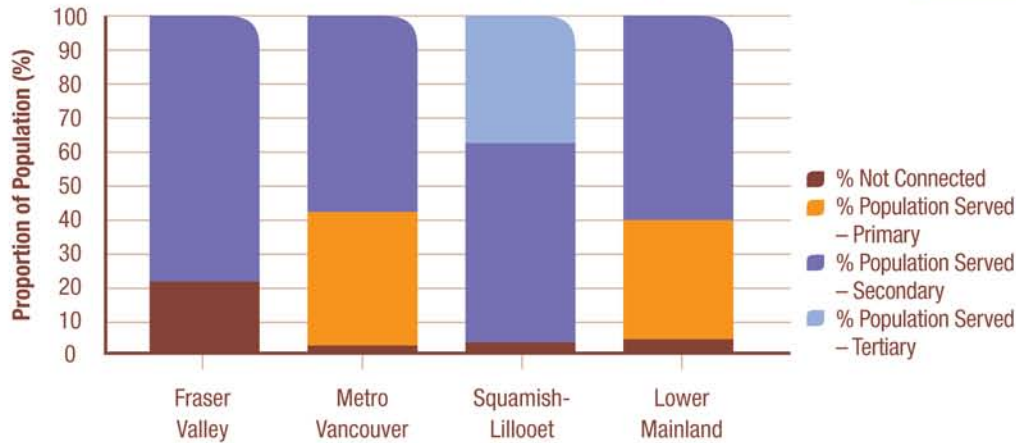
Consumption & Waste

The amount of wastes that we produce needs to be within the capacity of the land, water and air to receive them.

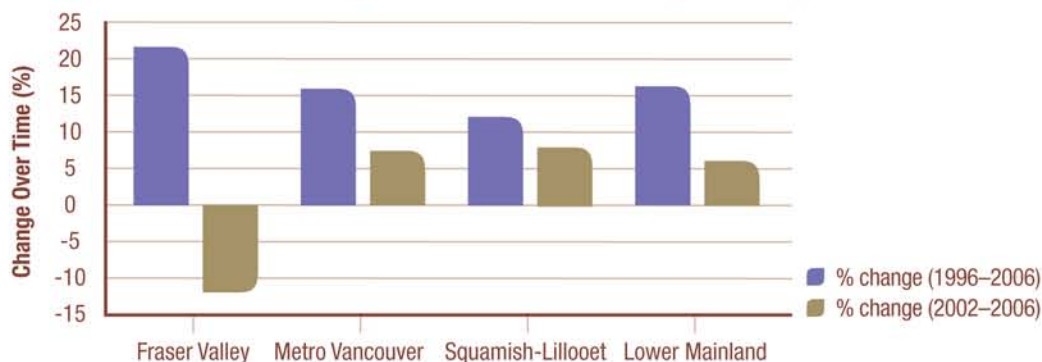


LIQUID & SOLID WASTES

Proportion of Population Served by Type of Wastewater Treatment in the Lower Mainland (2004; 2006)



Change in Total Solid Waste Disposal in the Lower Mainland (1996–2006)



◀ The majority of the Lower Mainland has secondary wastewater treatment.

◀ Solid waste increased between 1996 and 2006.