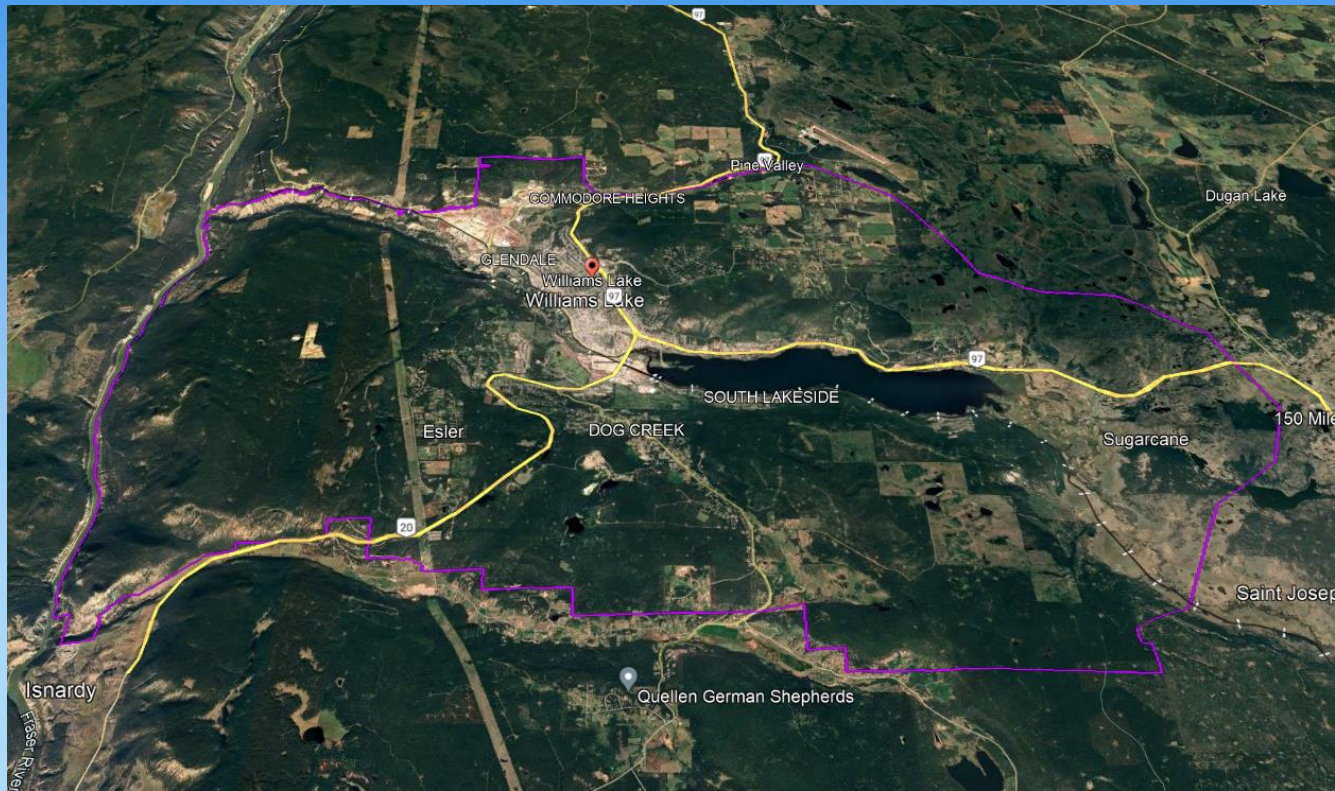




BRITISH
COLUMBIA

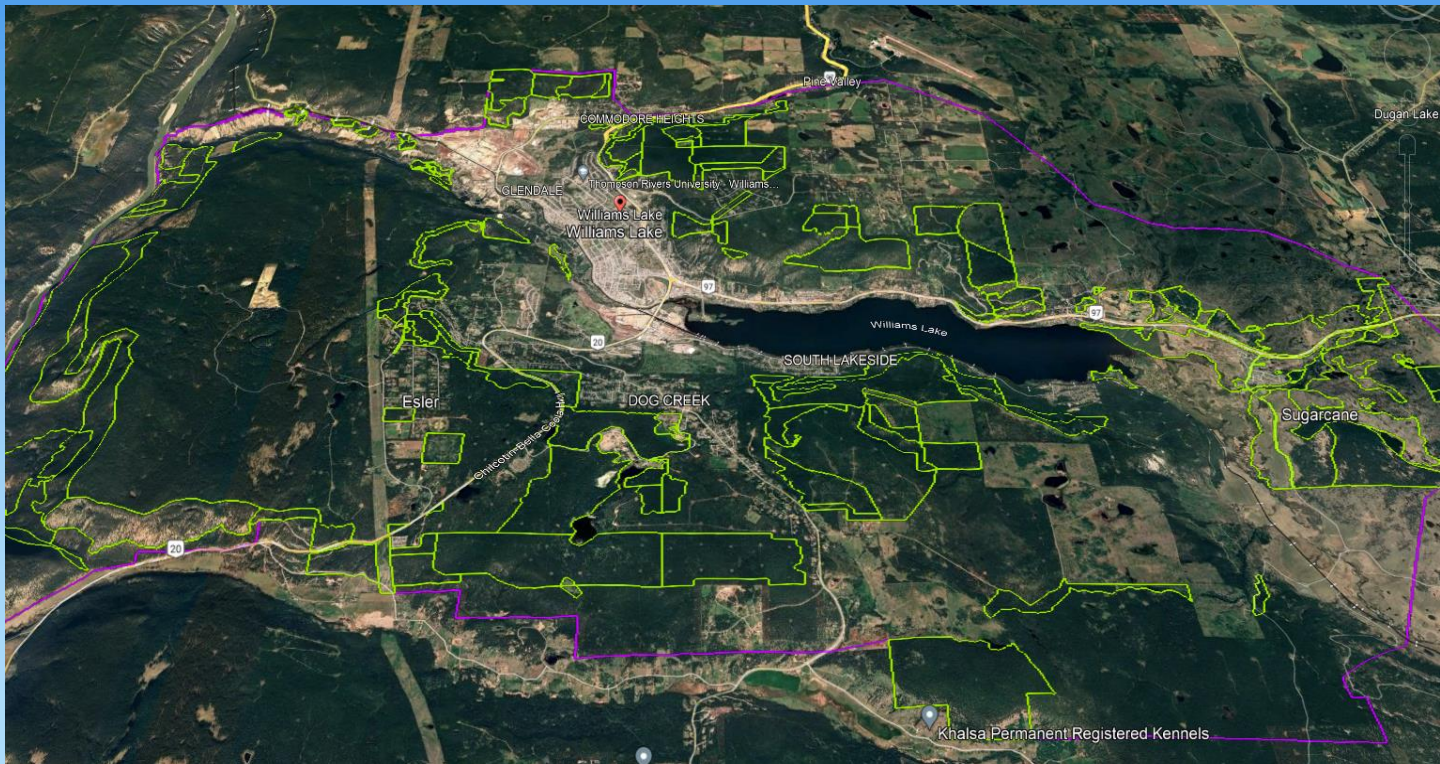
Williams Lake Tactical Plan





BRITISH
COLUMBIA

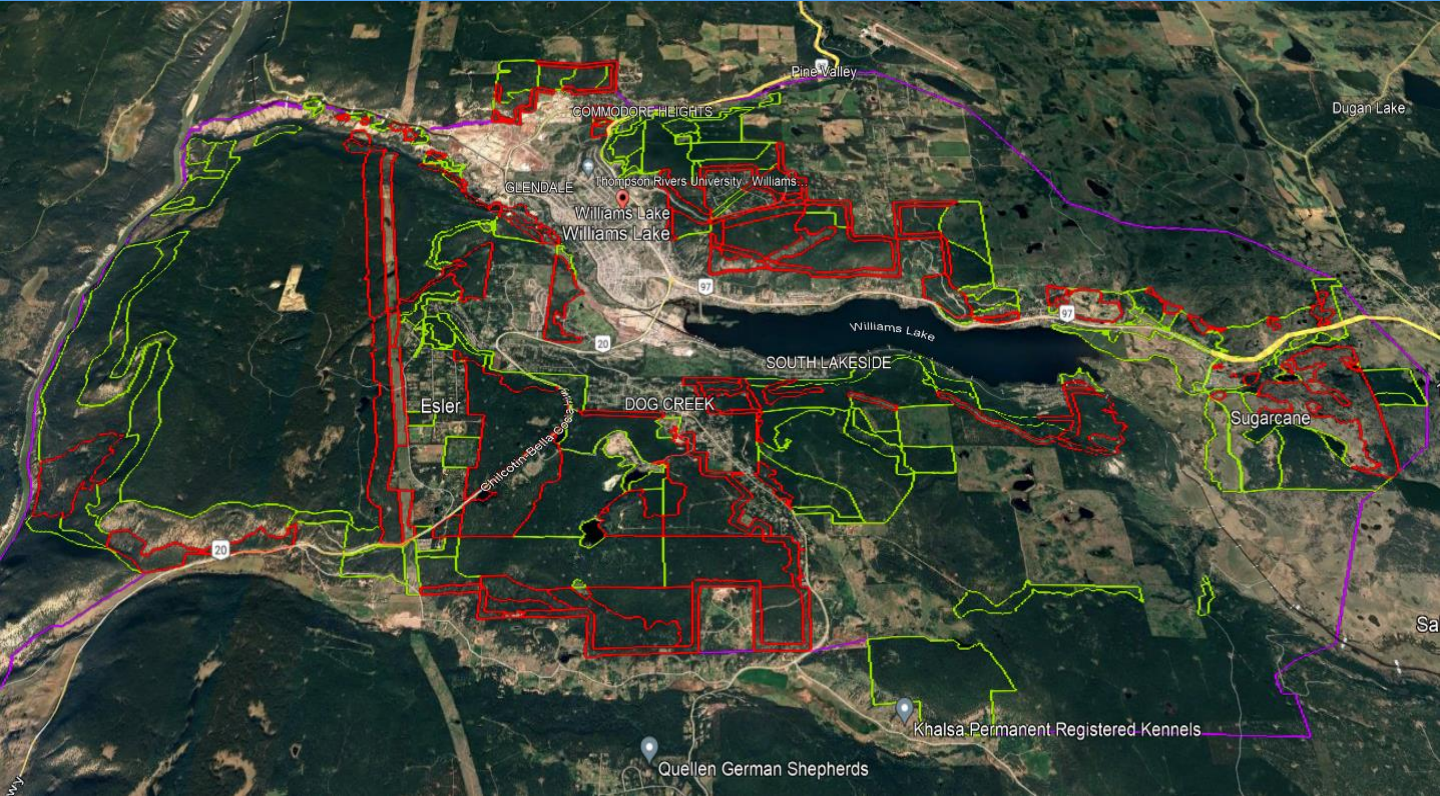
Fuel Treatment Unit (FTU)





BRITISH
COLUMBIA

Assess and Monitor Unit (AMU)





General Information

Fuel Treatment Units (FTUs)

GENERAL

WMU Name	WRRU Identifier	WRRU Category	FTU Identifier	Area (ha)	FTU Priority Level	Priority Level Rationale
WW	WW-CO-02	Community	WW-FTU-1	4.2	3	Unit contains hazardous fuels upwind and downslope from VAR but is over 250 m from VAR. Steep gully makes limits treatment options but majority of unit overlaps grassland benchmark area and could be maintained with prescribed fire.



Administration

ADMINISTRATION				
Land Ownership	Responsibility Area	Existing Tenure Holder	Overlapping Objectives	Project Status Comments
Crown Agency, Crown	Mof	Williams Lake Community Forest, TR0502T023	See Overlapping Objectives tab	Initiation



Stand Attributes

STAND ATTRIBUTES

BEC Zone	BEC Subzone	Fuel Type (PSTA)	Field Observed Fuel Type	Forest Health Issues	Overstory Conifer Density (trees/ha)	Understory Conifer Density (trees/ha)	Deciduous Tree Species Density (trees/ha)	Standing Dead Percentage	Crown Base Height Class Overstory (layer 1 and 2 trees)	Crown base height class understory (layer 3 trees)	Fuel Strata Gap Class	Surface Fuel Loading (Fine <7cm) Tonnes/hectare	Surface Fuel Loading (Coarse >7cm) Tonnes/hectare	Surface Fuel Description	Critical Surface Fuel Loading Threshold Exceeded
IDF	xm	0-1a/b	Mature Coniferous	No concerns noted	1600	400	0	10	Less than or equal to 2	Less than or equal to 2	Less than or equal to 1	15.0	4	surface fuel composition: moss,shrubs,dead_woody_debris,needlecast,forbs,grass; grass height (m): 0.2, grass distribution: patchy; shrub height (m): 0.5, shrub distribution: scattered; needlecast distribution: patchy; dead woody distribution: uniform	N/A



Treatment Strategies

TREATMENT STRATEGIES					
Treatment Objective and Strategy Rationale	Overstory Thin? [Reduce Canopy Bulk Density]	Understory Thin? [Reduce Ladder Fuels and Canopy Bulk Density]	Prune? [Raise Canopy Base Height + Reduce Ladder Fuels]	Surface Fuel Reduction? [Reduce Loading/Change Composition]	Broadcast Burn Opportunity? [Reduce fine fuels; ecosystem restoration]
open stand to allow prescribed fire operations. Prescribed burn for grassland benchmark objectives.	Yes	Yes	Yes	Yes	Yes



Treatment/Harvest Details

TREATMENT/HARVEST DETAILS

Recommended Treatment Method (Hand, Mechanical, both) ▼	Recommended Silviculture System (where overstory removal is required) ▼	Estimated Volume Present (cubic m/ha) ▼	BioFuel or Secondary Fibre Potential (Yes/NO) ▼	Secondary Fibre Products (list) ▼	Operability Concerns (Y/N) ▼	Additional Comments ▼
Both	Selective harvest	31.1	No		N	



BRITISH
COLUMBIA

The End

Questions?

Daniel.Merth@gov.bc.ca

250-302-5722