



Progress Update

Village of Clinton Community Wildfire Resiliency Plan

By Hailey Sigalet, RPF
Liam Grant, RPF

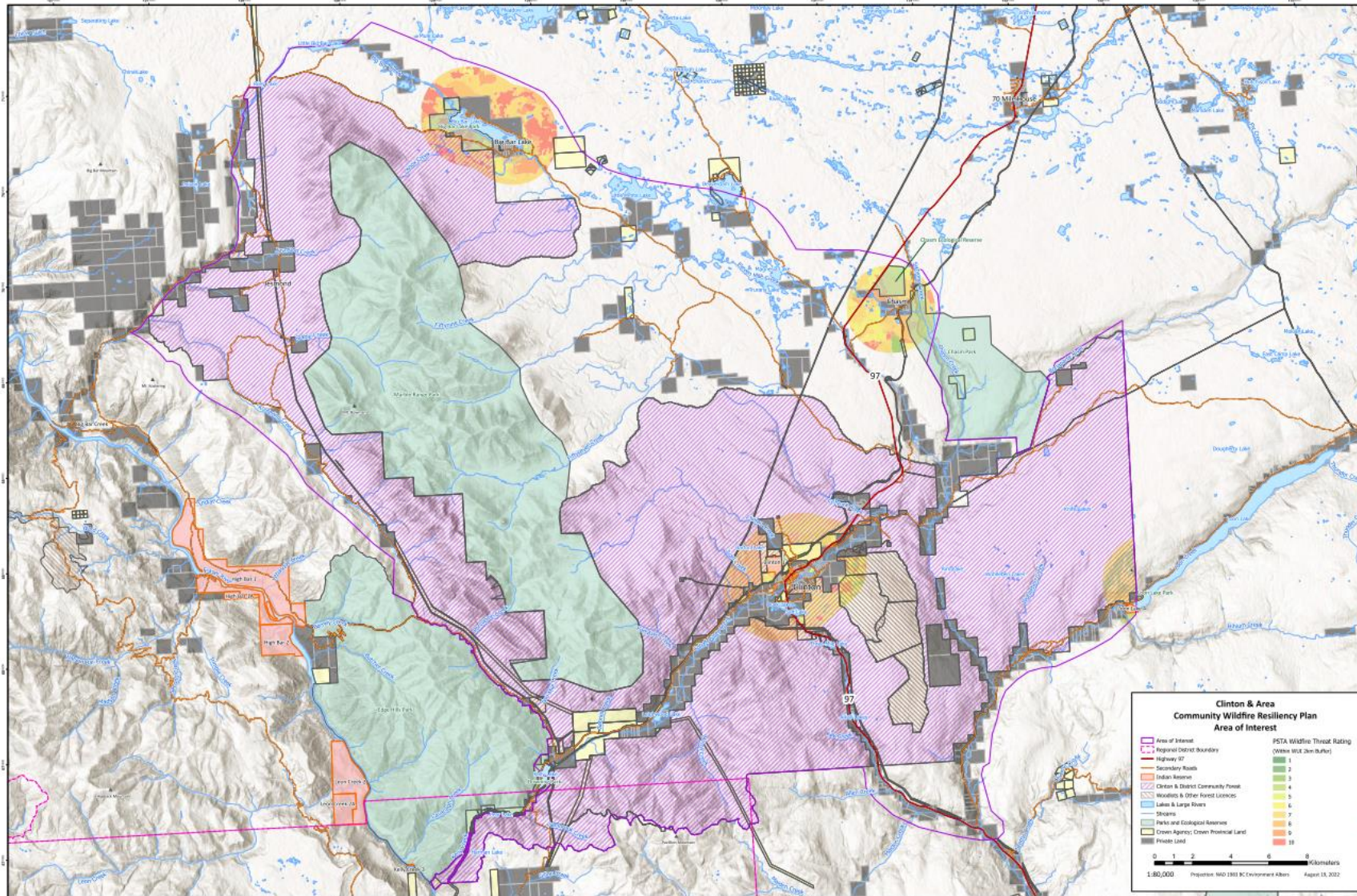
Outline

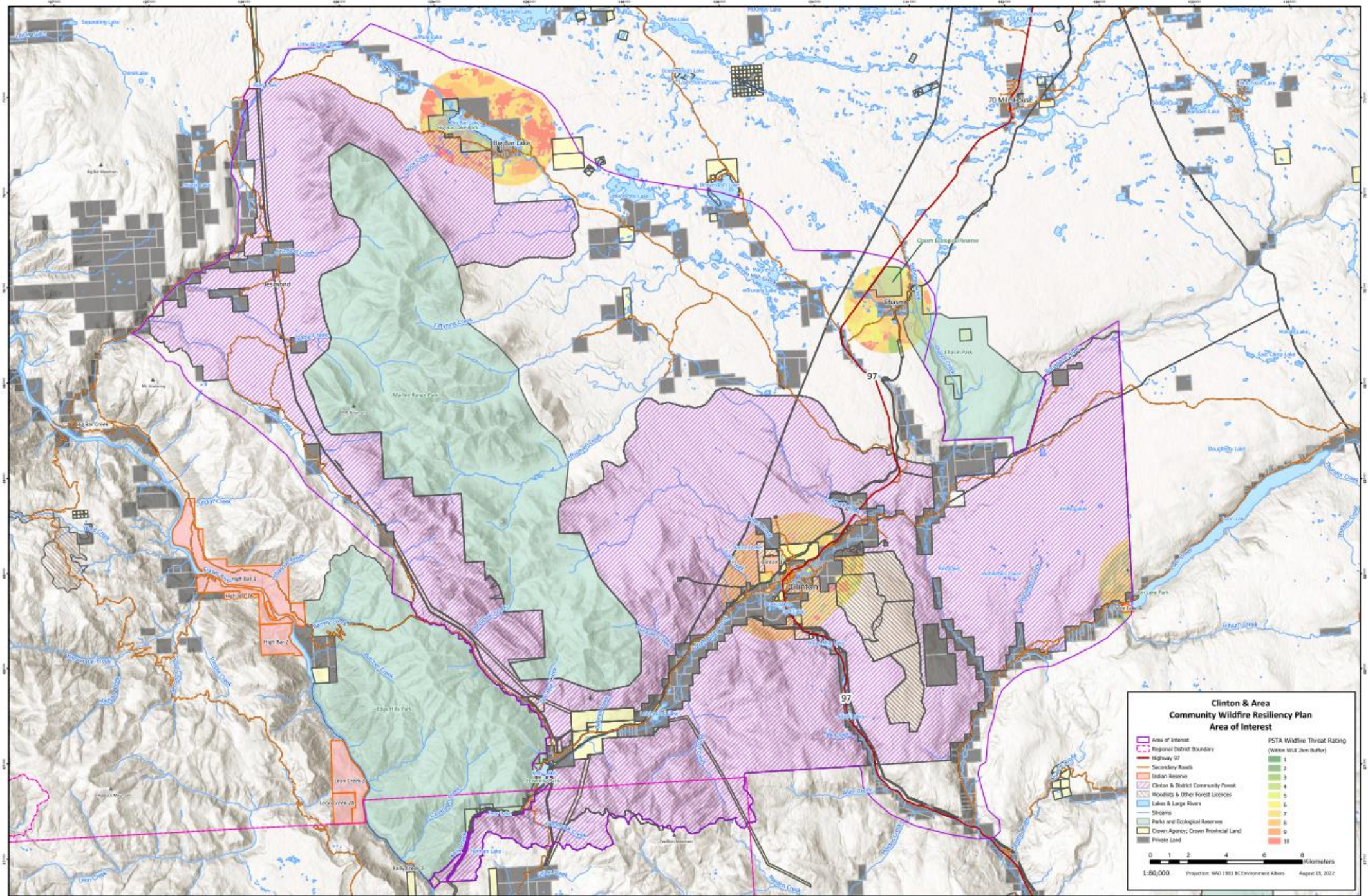
- ① **Community Wildfire Resiliency Plan**
- ② **Feedback from Open House**
- ③ **Wildfire Risk Assessment**
- ④ **Risk Evaluation/ Management Strategies**
- ⑤ **Next steps, timeline**

Community Wildfire Resiliency Plan



Area of Interest





Feedback From Open House

Public Open House held Sep. 8, 2022 in Clinton to solicit information, values, concerns, etc.



Format

Open, informal forum to solicit insight from community around concerns and key priorities



Contributors

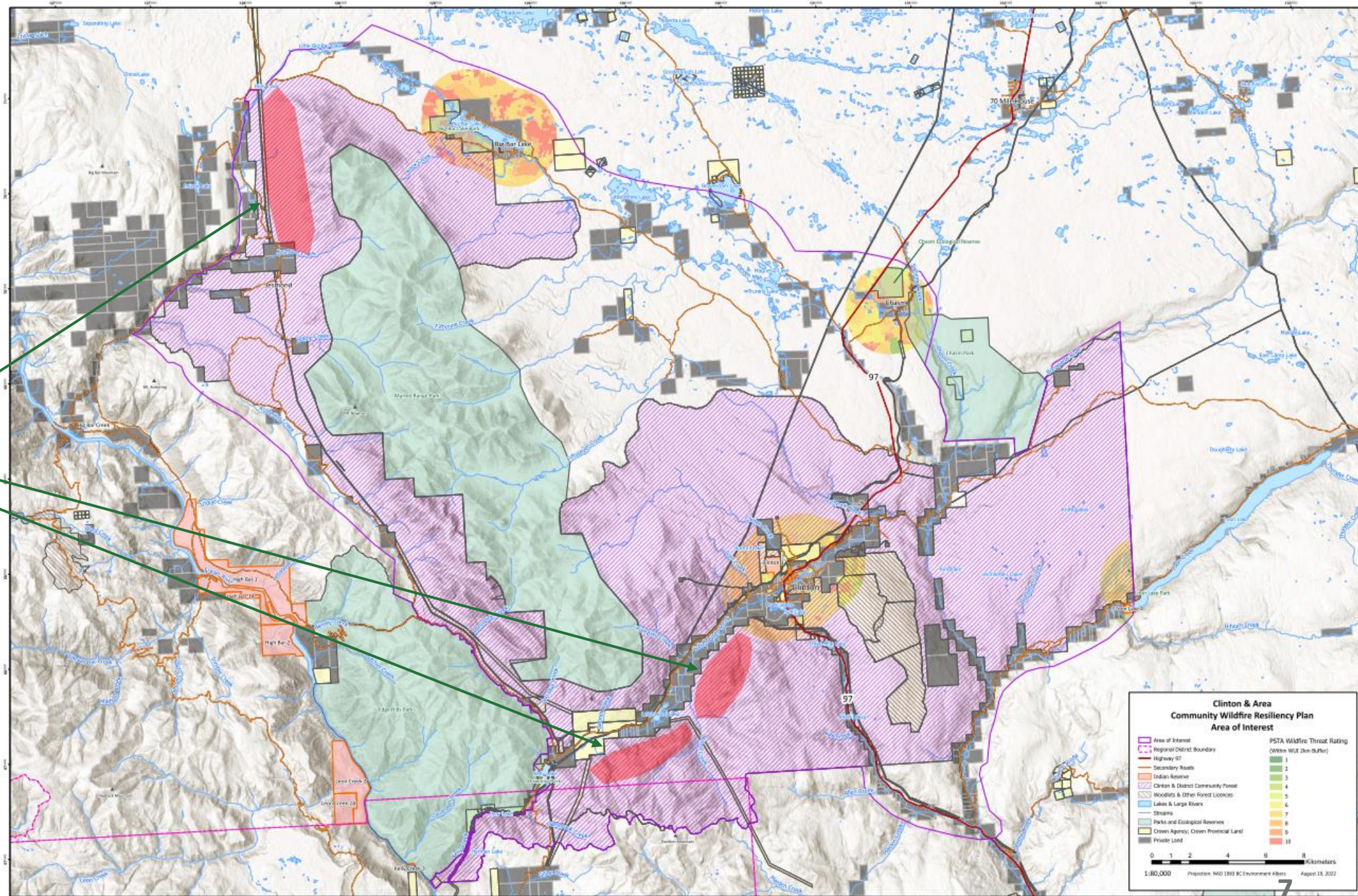
Attendees from BC Wildfire Service, 100 Mile House NR District, Fire Department.



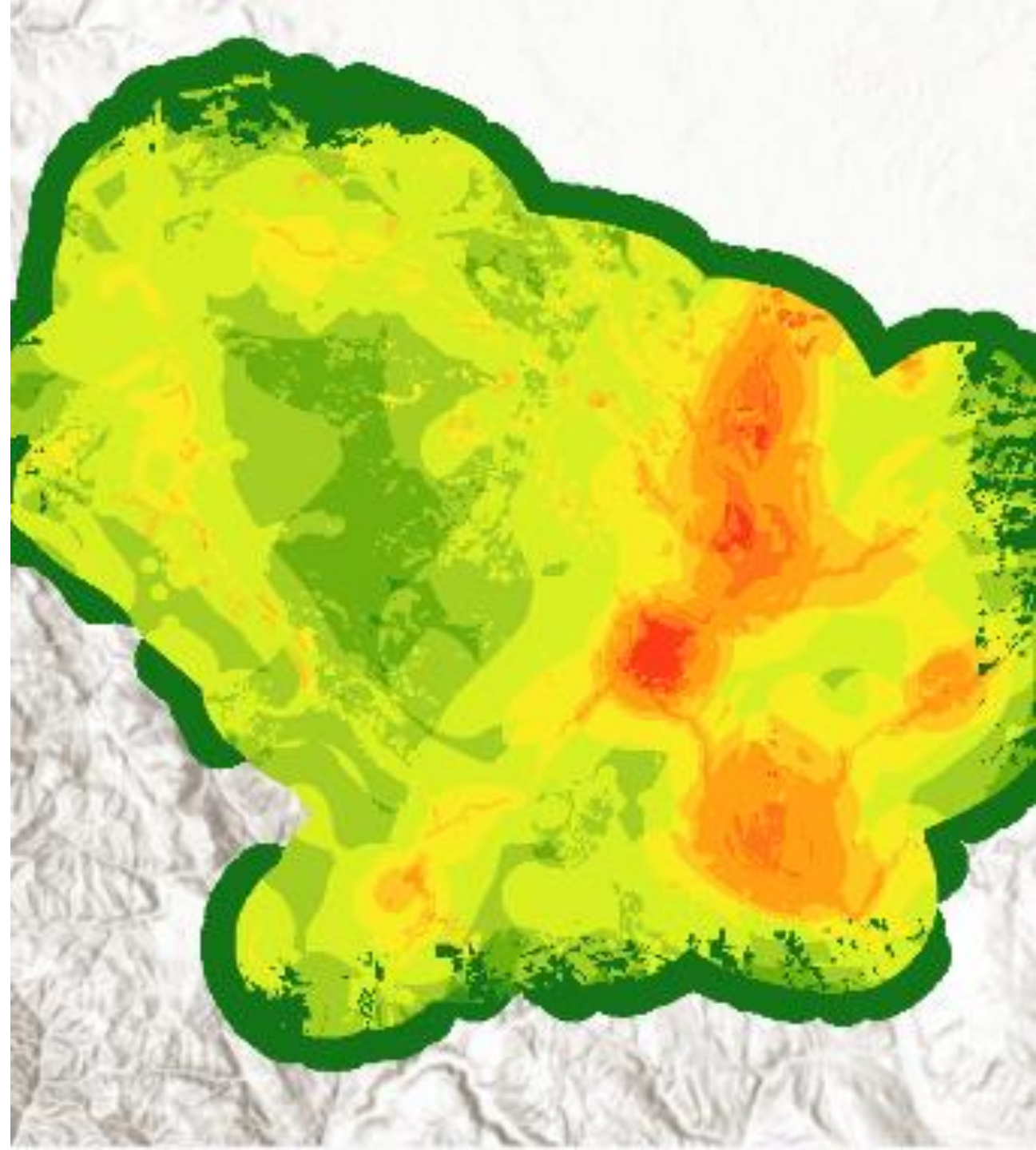
Guests

18 guests on sign in form from Clinton and surrounding area. Community survey distributed

Red and dead
areas identified
by the public

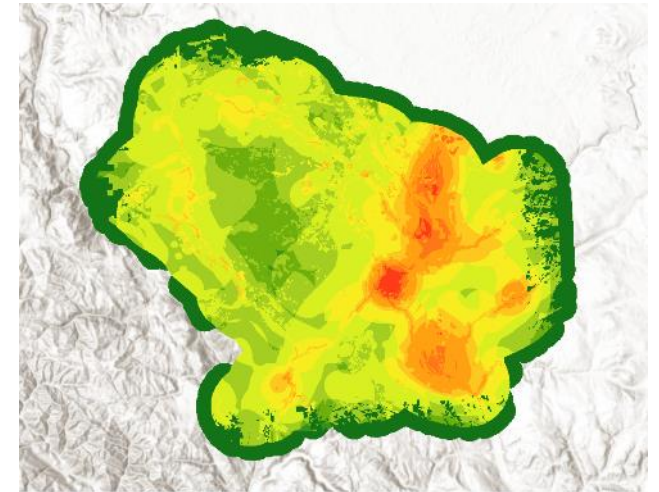
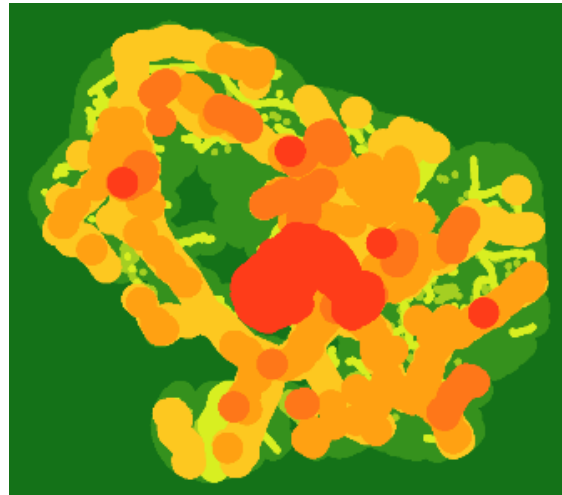
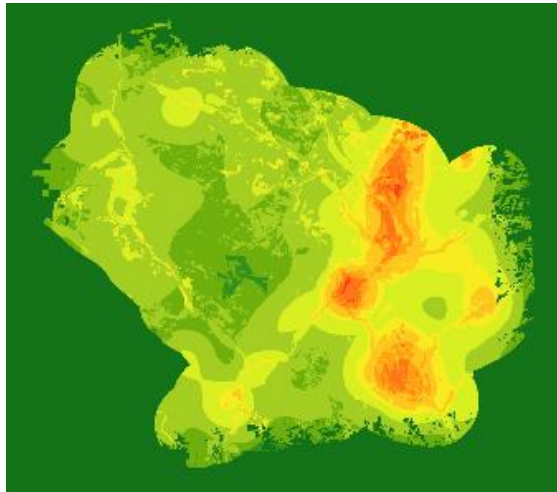


Wildfire Risk Assessment



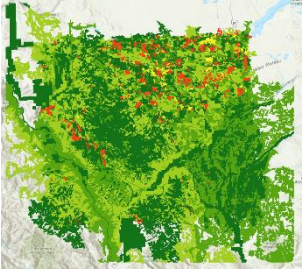
Risk Identification

Burn Probability + Values at Risk = Wildfire Risk

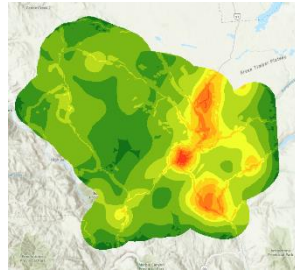


GIS Methodology

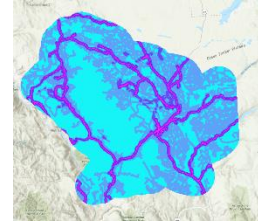
Headfire Intensity (40)



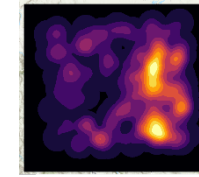
Ignition Probability (60)



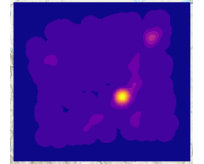
Proximity to Roads (20)



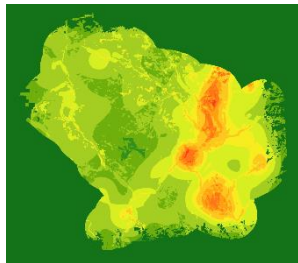
Lightning Fire Ignition Density (40)



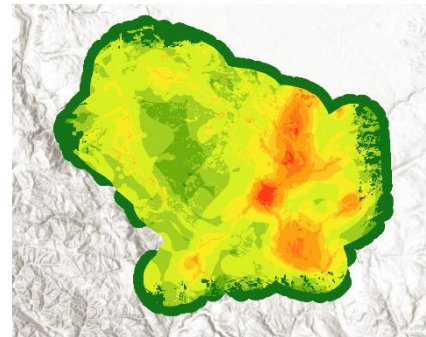
Human Fire Ignition Density (40)



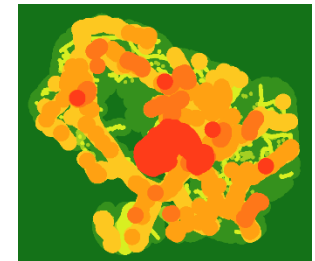
Burn Probability (40)



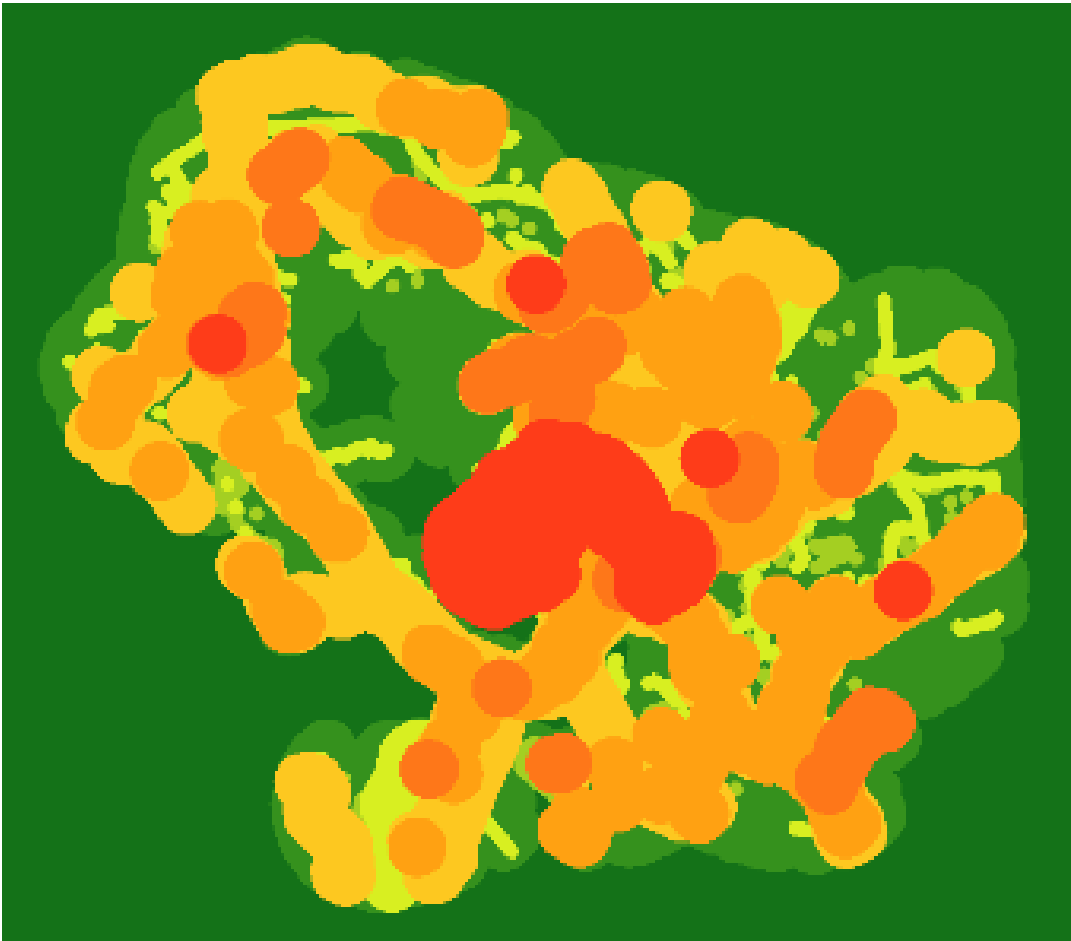
Wildfire Risk Product

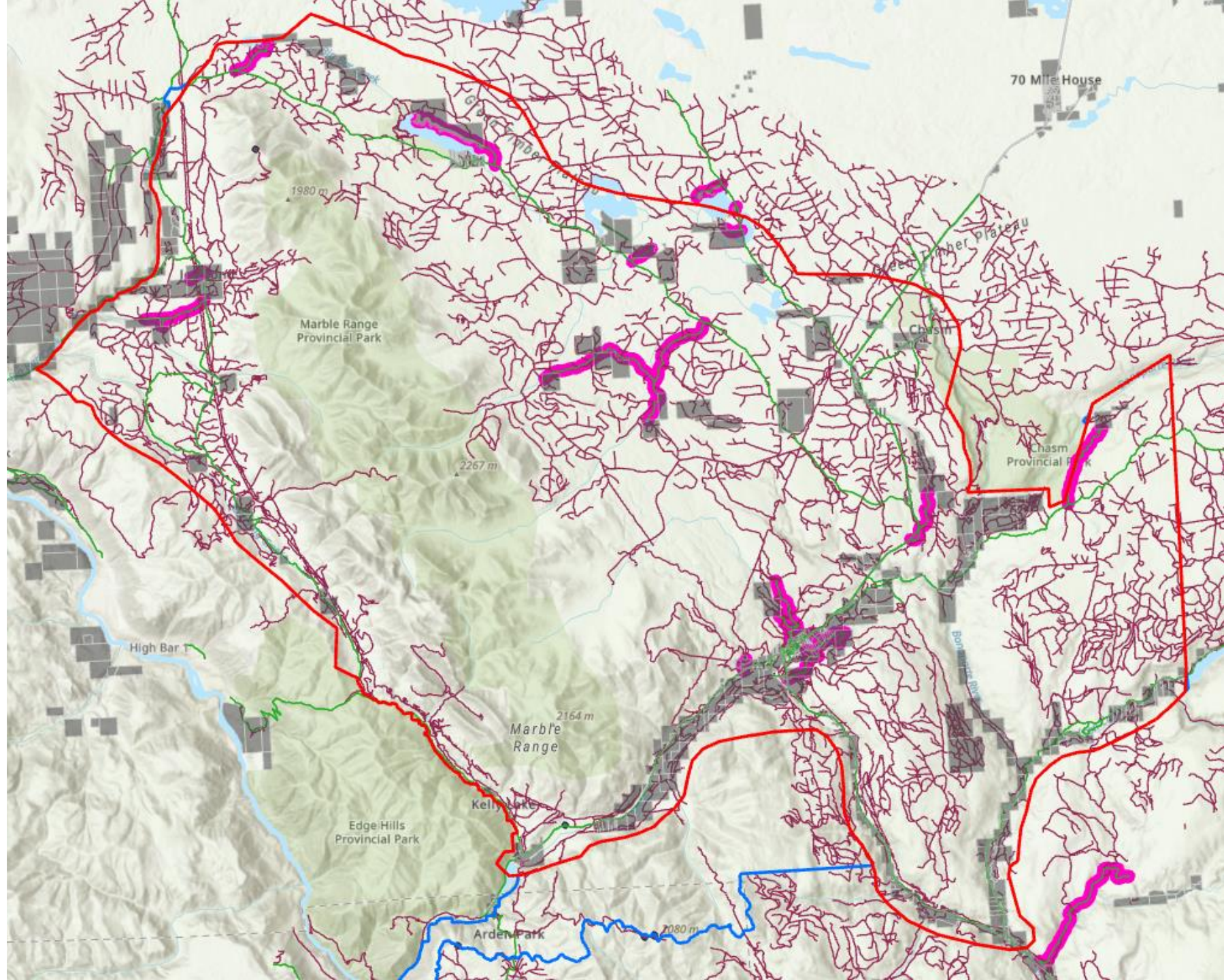


VAR Impact (60)

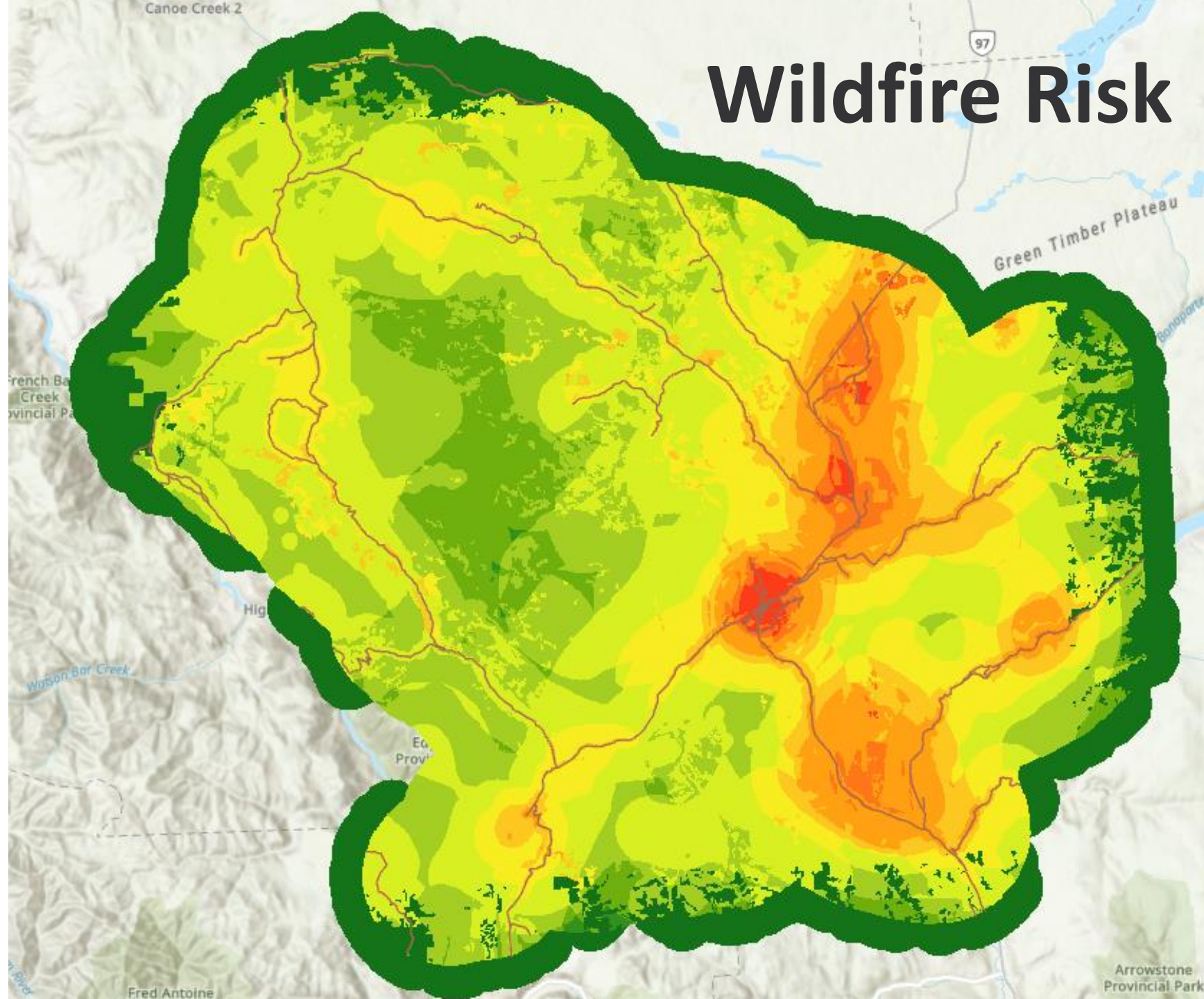


VAR Category	VAR Subcategory	VAR Indicator	Indicator Rank	Description/Definition
Human Life & Safety	People	Residences	8	Polygons less than 0.04 ha, qc of specific places, unidentified caravac buildings, trailer park, assisted living facility/tenior's housing
		Facility	7	Polygons greater than 0.04ha, qc of specific places, any type of building (or concentrated outdoor space) that people frequently occupy that is not a residence. Private airports.
		Campgrounds – People	7	Frontcountry camping facilities
		Travel Corridors - People	7	Paved roads
		Trail – People	2	Resource roads/tracks, trails
	Community	Municipalities	10	Designated municipalities
		Indian Resenes	8	Indian Resenes
		Structure Density	8	BC 1km WUI
	Evacuation	Travel Corridors – Evacuation	6	Paved roads
		Communications Tower – Evacuation	9	Communications towers
		Airports & Runways– Evacuation	7	Aiport facilities and/or runway footprints * includes private airports in aci
		Egress	9	Communities with one-way/diffcult access
Property & Critical Infrastructure	Community Infrastructure	Critical Public Infrastructure	10	First Responders, Hospitals, Government Buildings (for emergency response coordination), airports*no public airports in aci (so not included), Water & Sewage Treatment, Schools, community watershed.
		Other Public Infrastructure	8	Chio/Community Facilities (i.e. museum, library, sports facility), Dump.
	Other Infrastructure	Travel Corridors – Infrastructure	5	Paved Roads
		Transmission Lines & Substations – Infrastructure	7	Transmission Lines and Substations
		Communications Towers – Infrastructure	7	Communications Towers
		Commercial-Industrial Facilities – Infrastructure	7	Local commercial businesses, private industrial businesses/facilities, i.e. gravel yards/quarries, auto-recycler, greenhouse, old lumber yard. All features from Facilities layer in the "People" subcategory.
		Pipelines – Above Ground Infrastructure	3	Infrastructure for gas pipelines above ground – i.e. pump stations, valves, etc.
		Railway	5	Railway track
Environmental & Cultural Values	FN Cultural Sites	First Nations Cultural and/or archaeological sites	7	Local knowledge
	Other Cultural Sites	Other non-indigenous historical/cultural sites	2	Local knowledge
	Research Sites	Research sites	2	PSP and G&Y plots
	Wildlife Habitat	Ungulate Winter Range	3	Note- only mule deer UWR present in AOI
		Wildlife Habitat Areas	5	
	Old Growth	Old Growth	2	OGMAs (legal & non-legal), OGDAs
	Water	Water Sources	5	PODs, community watersheds
Resource Values	Forest Tenures	Area-based tenures	7	Community Forests, FN woodland licences, woodlots, TFLs.
		Mature merchantable timber	5	Stands from VRI > 250 m³/ha and no overlap with legal ogma, parks, no harvest uwr or whas.
		Plantation with Licensee investment	4	Local knowledge
	Recreation	Campgrounds - Resources	5	Frontcountry camping facilities
		Motorized trail	2	Resource roads & deactivated roads
		Trail	5	Trails/paths
	Range	Range licence – non-fence infrastructure	4	All non-fence infrastructure
		Range licences – fences	5	fences
		Grazing Crown Lease	2	Grazing or forage licence only



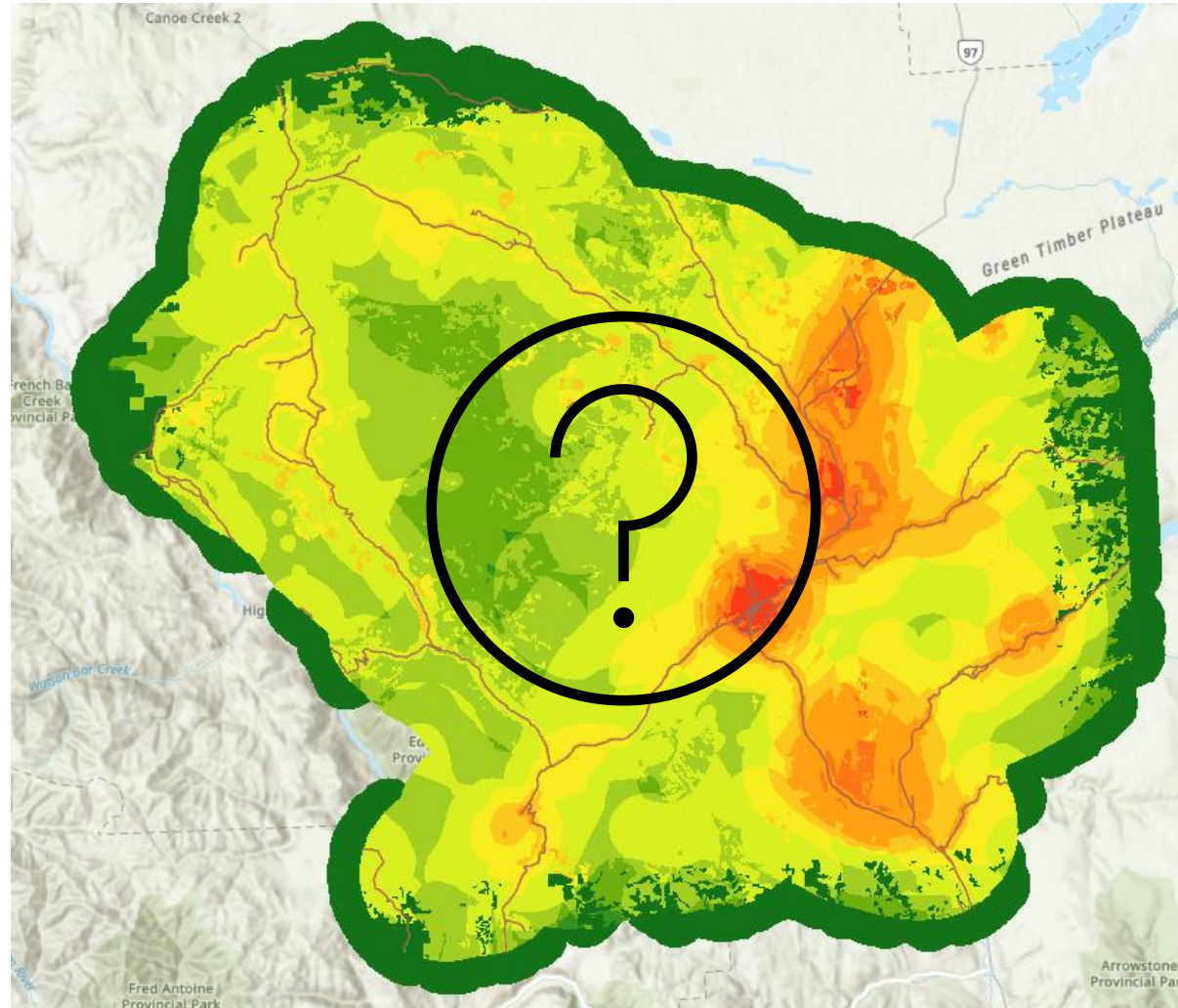


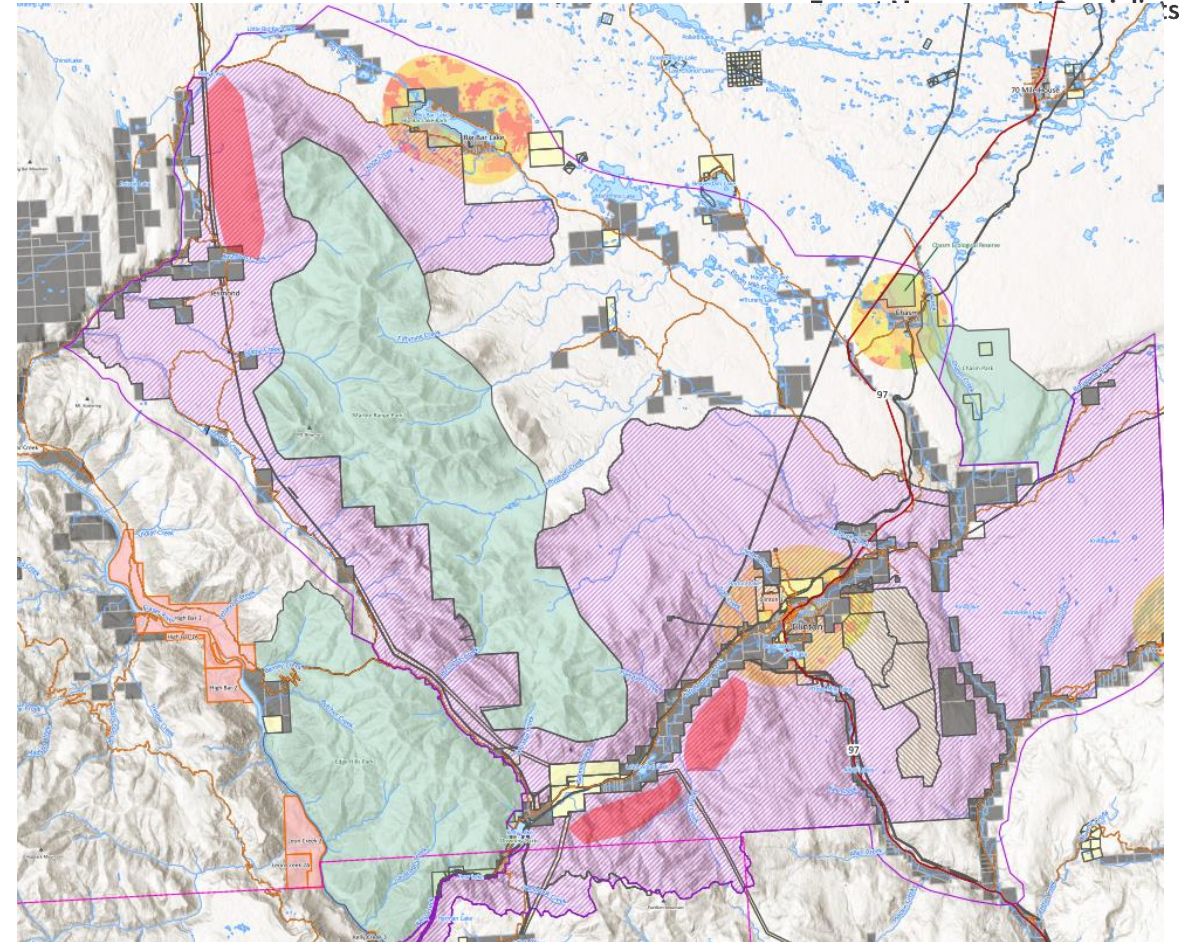
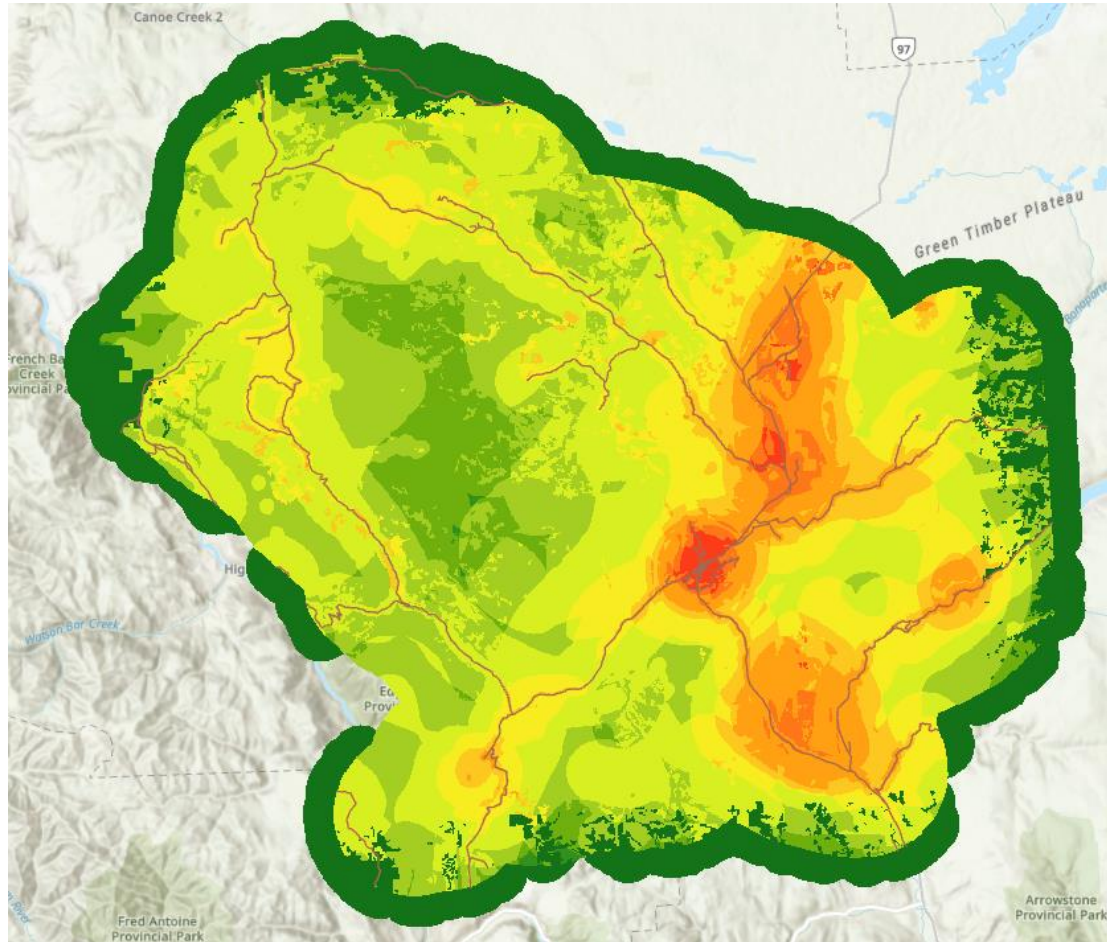
Wildfire Risk

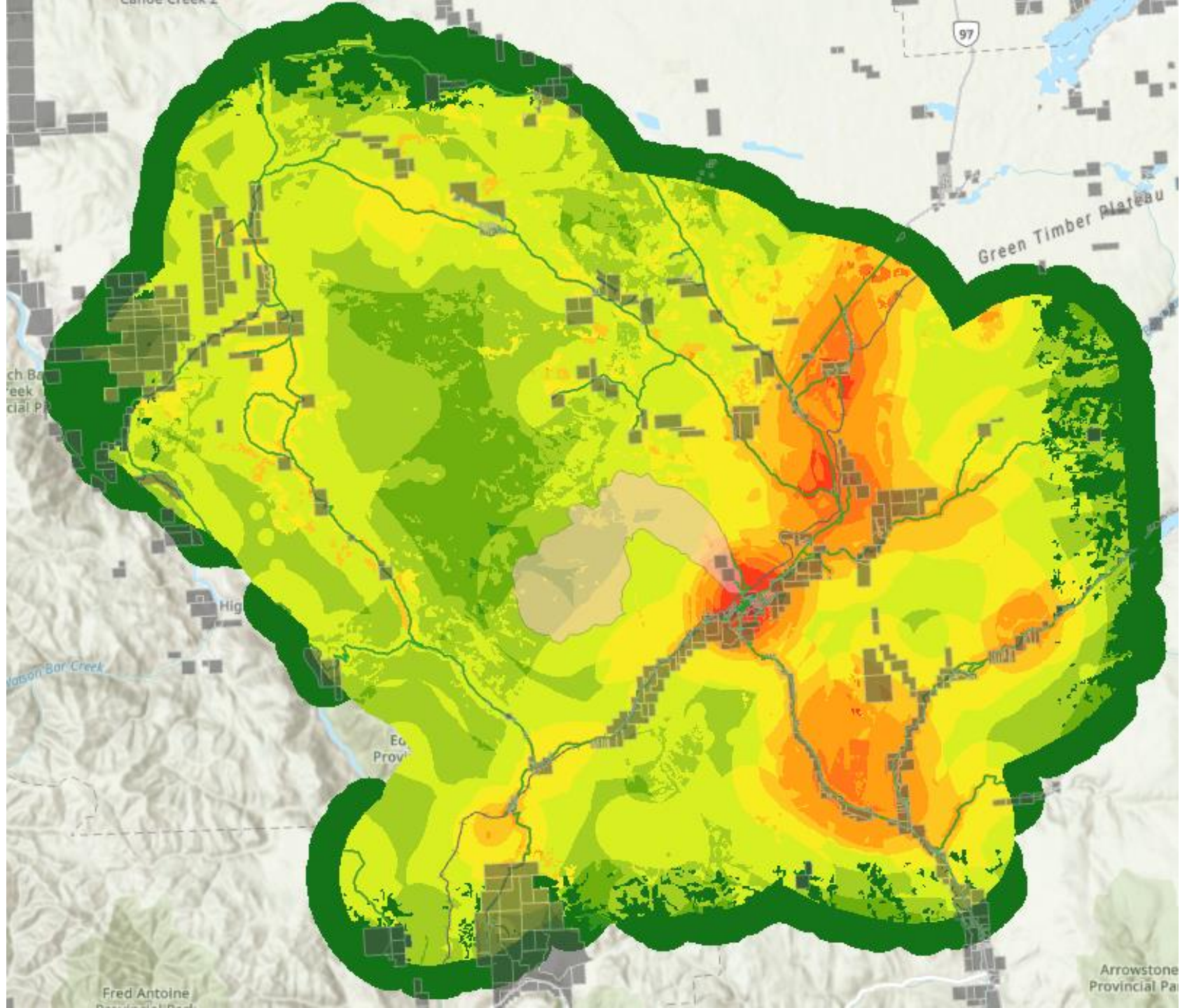


Wildfire Risk Analysis

What's going on? What's missing?

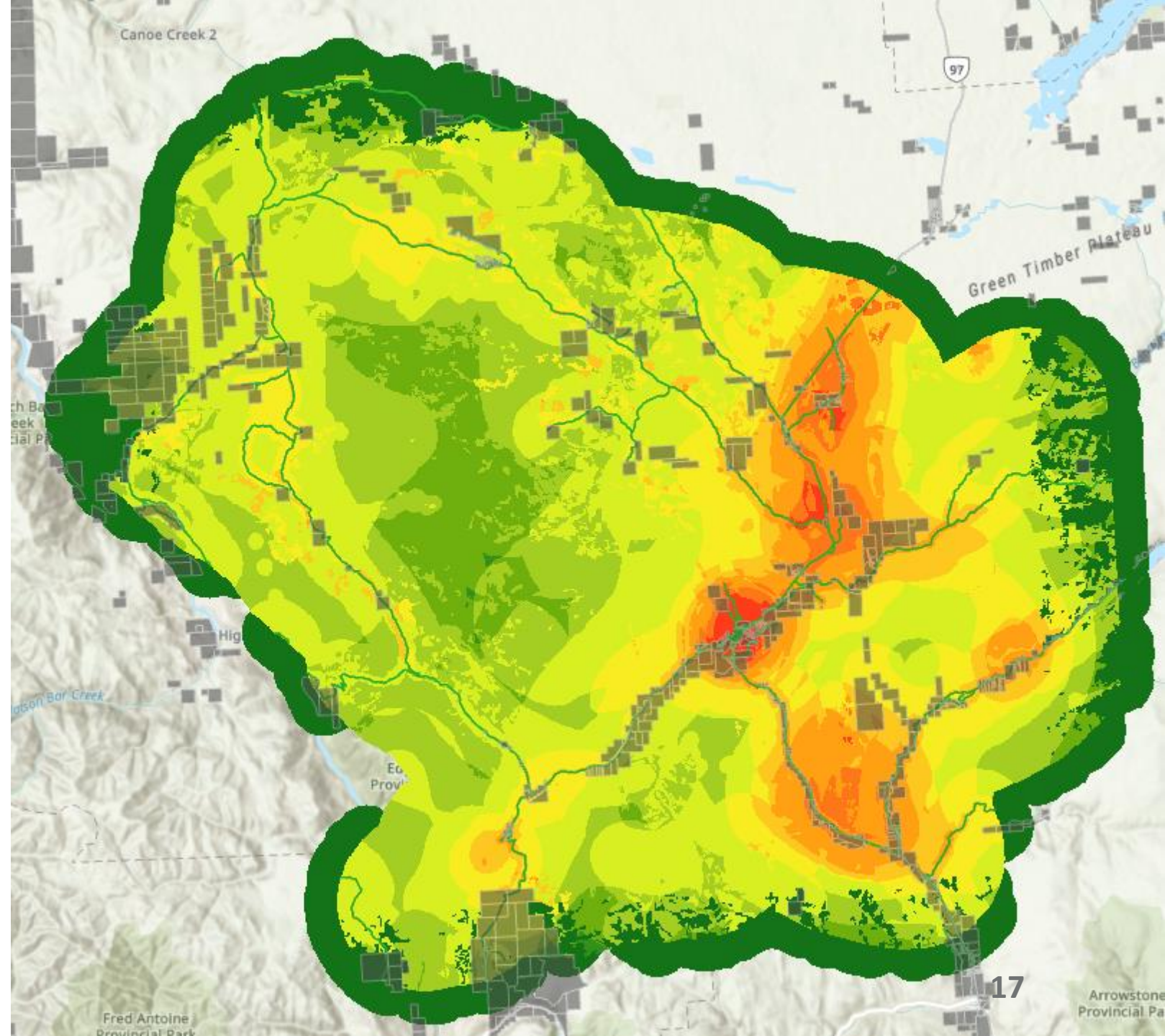






Areas of Hight Risk to look at:

- ▶ Clinton
- ▶ Travel corridors
- ▶ NE of Clinton
- ▶ SE of Clinton
- ▶ Etc.

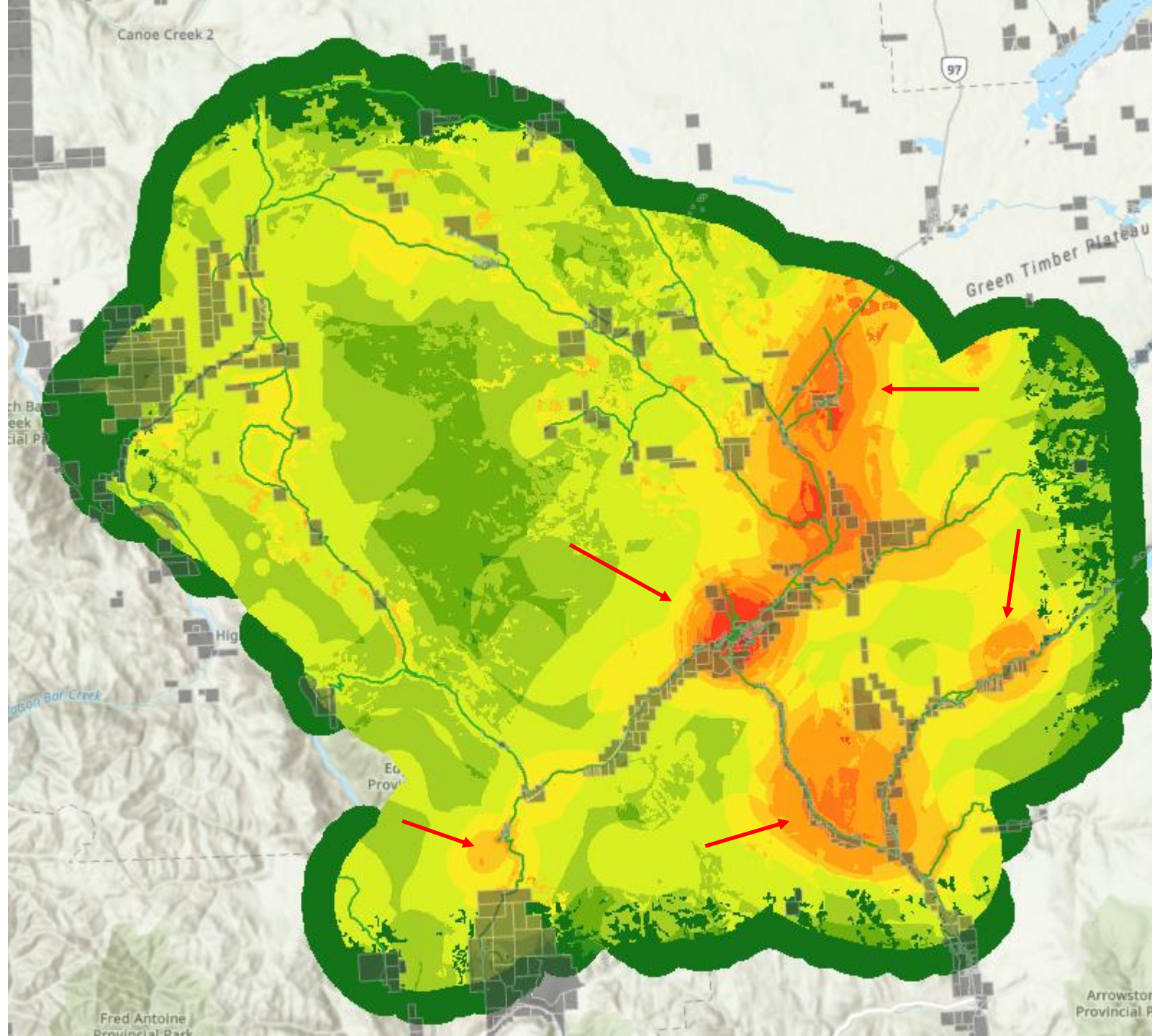


Wildfire Risk Evaluation / Strategies

Direction for CWRP

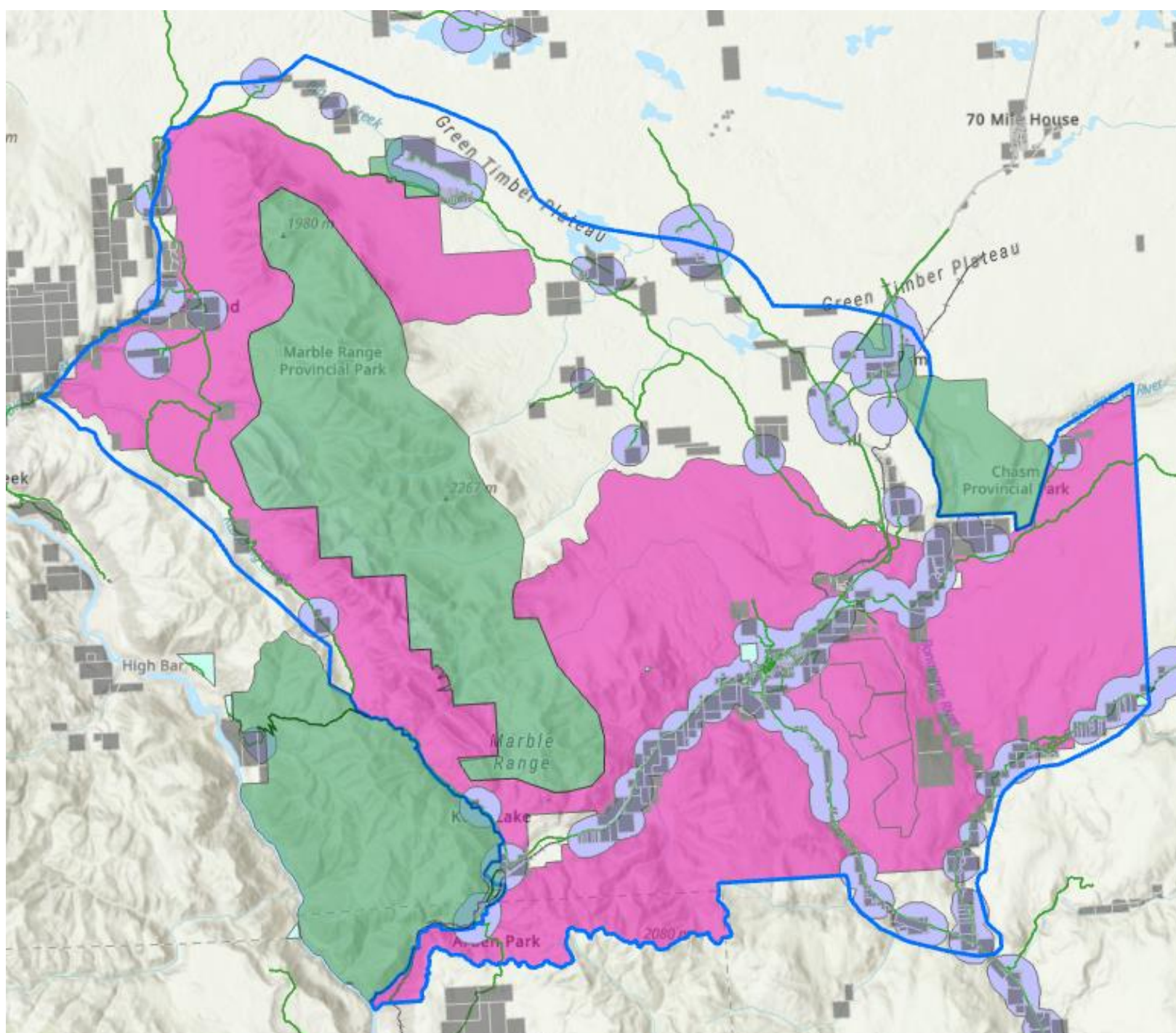
What risk is acceptable? What risk is not? Where should we focus our efforts?

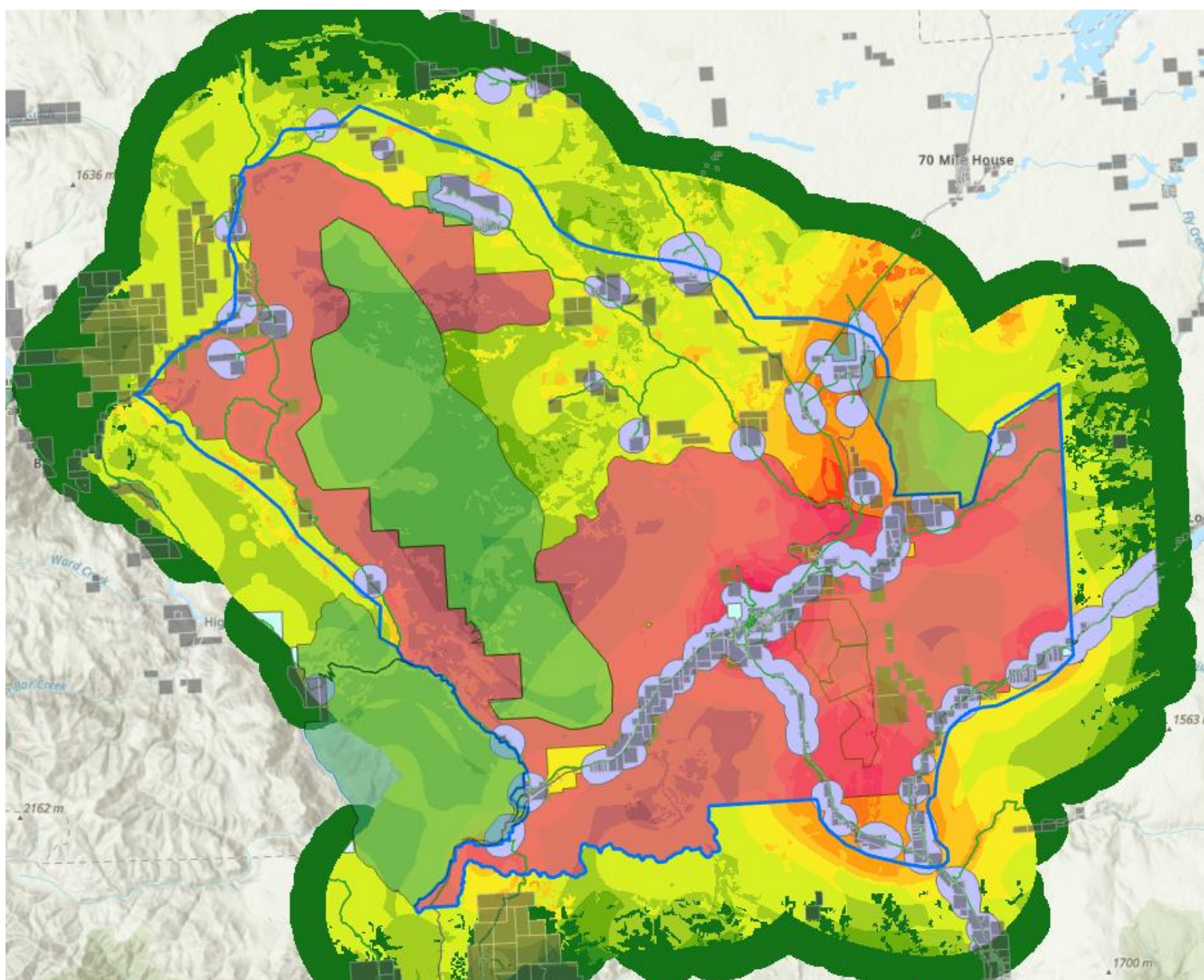




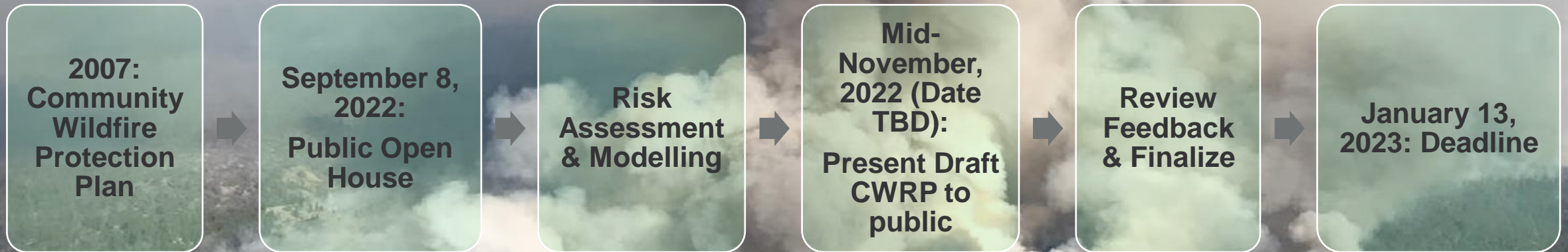
Partners

- ③ Village of Clinton (UBCM CRI)
- ③ Community Forest
- ③ BC Parks
- ③ Ministry of Forests
- ③ First Nations
- ③ Others?
- ③ Private property owners





Timeline





Questions?



Hailey Sigalet, RPF

Fuel Management Specialist
Kamloops, BC

cell 778-678-4636



Liam Grant, RPF

Planning Forester
Kamloops, BC

cell 250-443-5786