

SALMON ARM - LANDSCAPE FUEL MGT STRATEGY

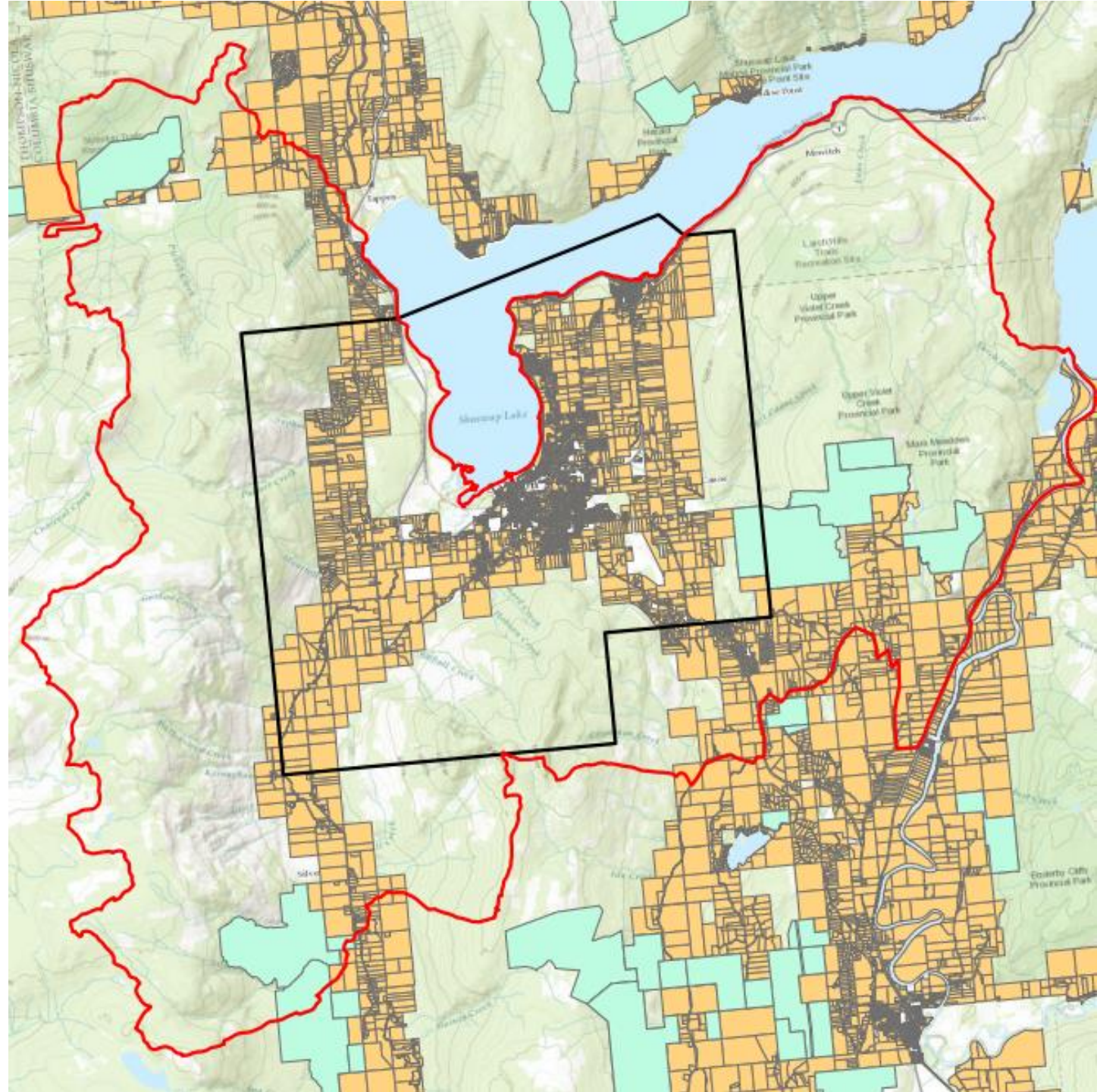
Overall Concept (Recap)

- Wildfire will be coming into Salmon Arm... what can we do on the land and forests, in advance to support BC Wildfire activities and operations
- One piece of the community wildfire risk equation...
- Fuel management in general
- Fuel corridors – roads, managed fuels, known to BCWS
- Multiple lines of defense around the community that BC Wildfire would consider using
- **Outcome** – a long-term plan that could be used to guide forest management activities in the “Salmon Arm bowl” to meet stated *community wildfire resilience* goals.

SALMON ARM - LANDSCAPE FUEL MGT STRATEGY

Preliminary AOI

- Will be refined.
- Shared as concept only



CoSA / First Nations Conversations

- Discussions will be facilitated by CoSA
- Stepping this out in the future
- Approaches and timelines will be flushed out

SALMON ARM - LANDSCAPE FUEL MGT STRATEGY

Proposed Planning Team

- **City of Salmon Arm**
- **Splatsin Development Corp**
- **Canoe Forest Products Ltd.**
- **Tolko Industries Ltd.**
- **BC Timber Sales**
- **BC Wildfire**
- **Okanagan Shuswap District (MoF)**

Responsibilities

- Funding
- Regular input and guidance
- Requirements or operational goals (BCWS)
- Provide base data
- Provide operational data
- Review and approve project updates and reporting

SALMON ARM - LANDSCAPE FUEL MGT STRATEGY

Proposed Collaborators

- Shuswap Trail Alliance
- Local Woodlot Association
- ORV/ATV?
- Others

Note:

- Also proposing engagement with the general public to solicit input

Responsibilities

- Contribute perspectives and input throughout the project
- Review and comment on project progress and preliminary and draft plans

SALMON ARM - LANDSCAPE FUEL MGT STRATEGY

Next Steps

- **CoSA/First Nations** - share and discuss vision between indigenous communities and City of Salmon Arm
- **Planning Team** - Meet with planning team to review Project Workplan and confirm funding, timelines, plan for implementation
 - Lead: Randy S to coordinate
 - Timeline: May/June?

SALMON ARM - LANDSCAPE FUEL MGT STRATEGY

Questions?

Randy Spyksma
rspyksma@forsite.ca
250-804-6305