

SLRD Update:

# Lillooet and Area Community Wildfire Preparedness Roundtable



**SQUAMISH - LILLOOET**  
REGIONAL DISTRICT

# SLRD FireSmart Work Underway



- CRI 2021 – FireSmart Community Funding and Supports (\$258 993.60)
  - Home Ignition Zone Assessments, Rebate Program, Community Education Days, Residential Veg Debris Disposal, Community Wildfire Resiliency Plans, Community FireSmart Resiliency Committees
  - CWRPs for SLRD Electoral Areas A & B are the final deliverables of this project, expected Q1 2023
- CRI 2021 – FireSmart for Economic Recovery (\$358 000.00)
  - In partnership with the DOL, completed FireSmart work in the Home Ignition Zones of 102 properties of seniors aged 65+
  - Final reporting for this project is underway now
- CRI 2022 – FireSmart Community Funding and Supports (\$216 718.000)
  - Home Ignition Zone Assessments, Rebate Program, Community Education Days, Residential Veg Debris Disposal, FireSmart Neighbourhood Recognitions, Community FireSmart Resiliency Committees
  - Will contract a FireSmart Coordinator and LFRs in the coming weeks

# Community Wildfire Resiliency Plans

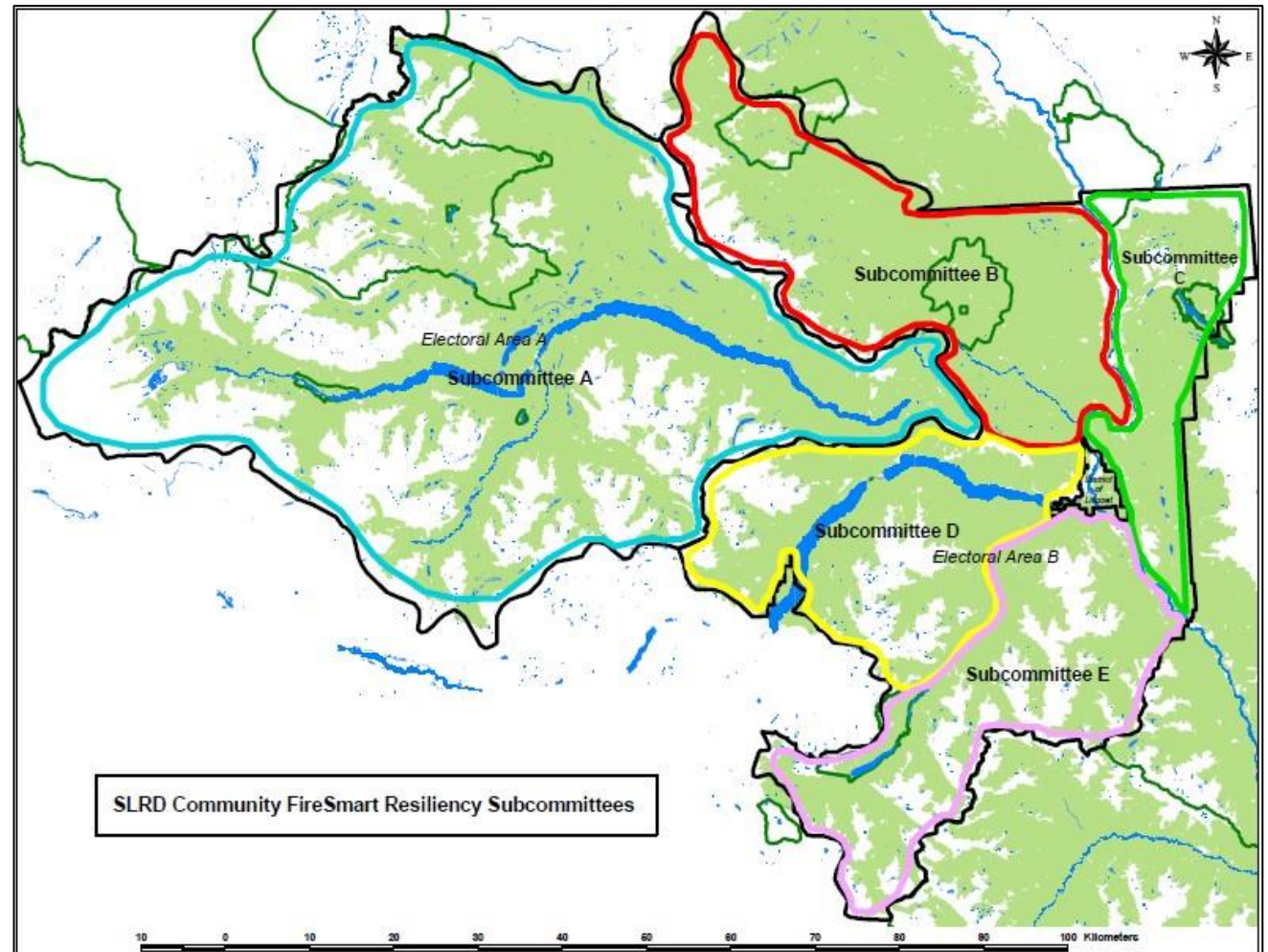


- Completed for SLRD Electoral Areas C & D and available on the SLRD website
- CWRPs for SLRD Areas A & B are in progress, expected delivery in Q1 2023
- CWRPs include:
  - Assessing wildfire risk
  - Recommendations for fire risk reduction, framed within the 7 FireSmart Disciplines
  - Establishment of Community Wildfire Resiliency Committees

# Community Wildfire Resiliency Committees



- X5 subcommittees are being established as forums to discuss interface fire risk reduction at the community level
- Intended to support the development of the CWRPs
- Brings together stakeholders including:
  - Electoral Area Community members
  - First Nations
  - District of Lillooet
  - BCWFS
  - MOF



# FireSmart Disciplines in the Lillooet/St'at'imc/SLRD A and B areas



**Interagency Cooperation** – *“FireSmart is a shared responsibility, which means it relies on strong and lasting partnerships. Promoting collaboration between agencies and across different levels of government will better support community wildfire preparedness, prevention, response, and recovery.”*

## Examples:

- Lillooet and Area Community Wildfire Preparedness Roundtable
- Community Wildfire Resiliency Committees

# FireSmart Disciplines in the Lillooet/St'at'imc/SLRD A and B areas



**Cross-training** – *“There are two kinds of firefighters: wildfire and structural. Many other local resources may also be involved in managing a wildfire incident. When firefighters are cross-trained, response capabilities are improved, and communities are safer.”*

## Examples:

- LTC & DOL Regional EOC / Evacuation Exercise 23-24 Jun 22
- DOL & SLRD Joint ESS Exercise – Q3 2022?
  - \$50 000 for an exercise and ESS ERA equipment

# FireSmart Disciplines in the Lillooet/St'at'imc/SLRD A and B areas



**Emergency Planning** – *“It takes everyone from firefighters to government representatives to homeowners to have the best-laid plans in a worst-case scenario. Encouraging emergency planning by combining local knowledge with expertise in wildfire management helps communities become better prepared in responding to and recovering from wildfires.”*

## Examples:

- Contingency Plan for the Mass Evacuation of the Lillooet Area due to Wildfire  
– Created in Summer 2021

# FireSmart Disciplines in the Lillooet/St'at'imc/SLRD A and B areas



## Facilitated Discussion:

*What's working?*

*Where are the gaps?*

*How do we fix it?*