



A Disaster Mitigation Project on the Risks of Flood, Landslide and Debris Flows Thompson Watershed Risk Assessment



A risk assessment on flood, landslide and debris flows is underway in the Thompson River watershed – encompassing the North Thompson, South Thompson, Nicola, Bonaparte and Thompson Rivers (from Kamloops to the Fraser/Thompson confluence at Lytton)

About the Risk Assessment

Over the last two decades, there have been high peak river flows in the Thompson watershed during spring freshet, as well as intense summer rain storms with flash floods in some locations and winter ice jams in others.

A risk assessment initiative for the watershed was launched in February 2018 at a Community-to-Community Forum in Kamloops, with participation of local governments and First Nations in the region.

The risk assessment will identify flood, debris and landslide hazards, potential impacts, and community and infrastructure vulnerabilities as well as the overall flood risk profile for the region. The aim is to raise awareness, support mitigation planning and action, and reduce the magnitude of future emergencies.



This initiative brings together representatives of large cities, small municipalities, rural areas and First Nations communities – to examine common risks and explore opportunities to work together across the watershed. Over 200,000 live in the Thompson watershed, which spans 5.6 million hectares.

One of the first steps is to compile data from risk assessments of the recent past, and subsequently to fill in information gaps and develop a consistent, regional-scale approach across the watershed. The initiative will also identify flood mapping and mitigation planning that is completed or underway.

The Thompson Watershed Risk Assessment is funded equally by Emergency Management BC and Public Safety Canada (through Stream 1 of the National Disaster Mitigation Program).

The risk assessment is expected to complete in March 2019.

Learn more

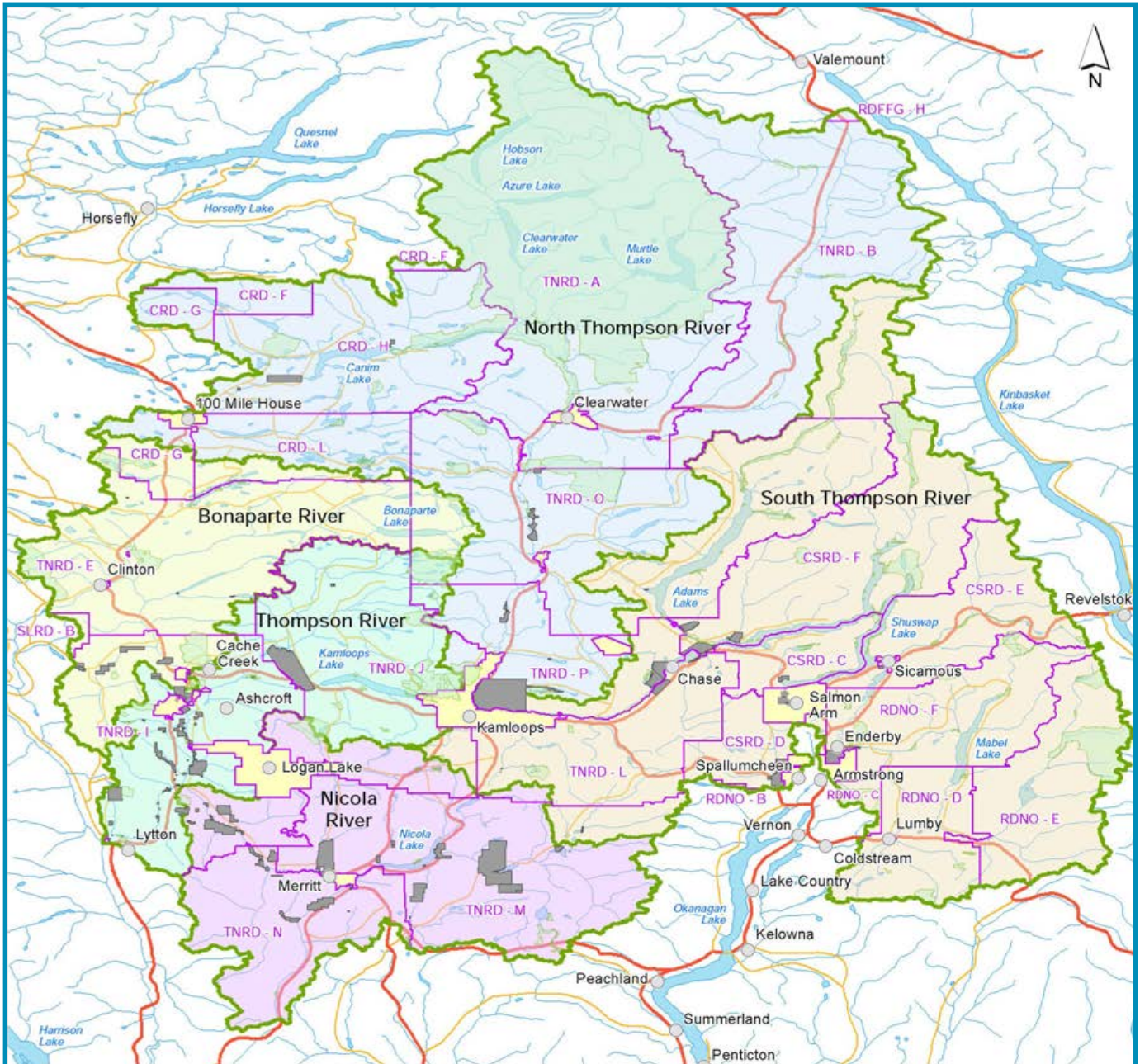
The Fraser Basin Council (FBC) is a charitable non-profit organization that brings people together to advance sustainability in the Fraser River Basin and throughout BC. FBC is managing the risk assessment through its Thompson office in Kamloops. To learn more, visit thompsonflood.ca.

Mike Simpson, Senior Regional Manager, FBC
T: 250 314-9660 | E: msimpson@fraserbasin.bc.ca

Kris Holm, Senior Geoscientist, BGC Engineering Inc.
E: kholm@bgcengineering.ca

Photo left: Guichon Creek flood 2017 (Jason Miller)

Jurisdictions within the Thompson Watershed



Legend

- | | | |
|--------------|----------------------------|----------------------|
| ● City, Town | Administration Area | Watershed |
| Major Road | Municipality | Bonaparte River |
| Minor Road | IR | Nicola River |
| | Electoral Area | North Thompson River |
| | Park | South Thompson River |
| | | Thompson River |

Regional District Abbreviation Key

- CRD—Cariboo Regional District
- FVRD—Fraser Valley Regional District
- RDCK—Regional District of Central Kootenay
- CSRD—Columbia Shuswap Regional District
- RDNO—Regional District of North Okanagan
- RDOS—Regional District of Okanagan Similkameen
- SLRD—Squamish-Lillooet Regional District
- TNRD—Thompson Nicola Regional District

The Secwepemc, Nlaka'pamux, Sylix and St'at'imc nations assert title and rights over different portions of the Thompson Watershed

