

***A Study of the Forest Fibre
Currently Being Burned in Conventional
Timber Harvest Operations.***

Walt Klenner

Wildlife Ecologist

Research Section, FLNRO Thompson-Okanagan Region

Kamloops Air Quality Roundtable, 7 April 2017



Concerns Around Burning the Material in Cullpiles

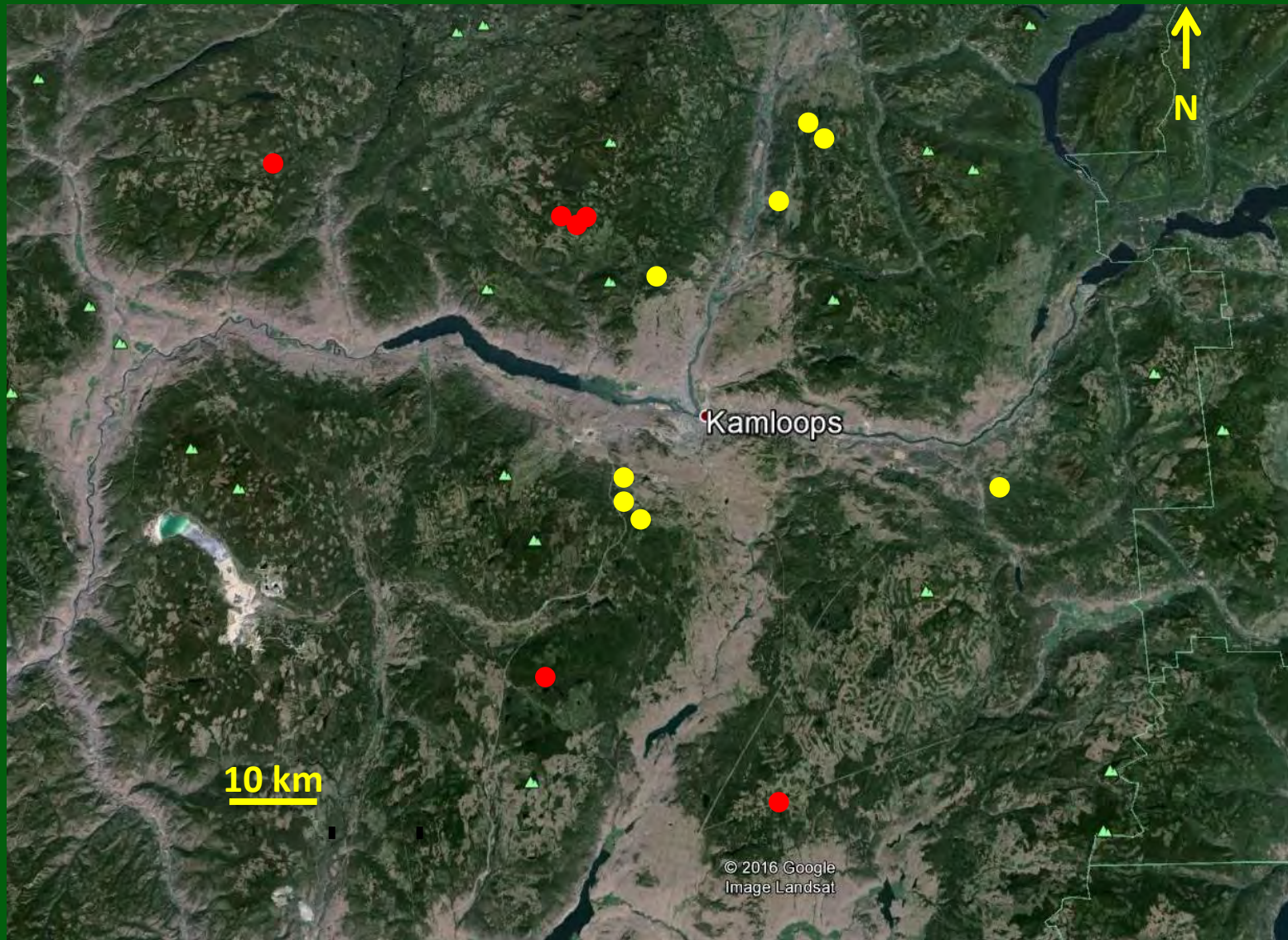
1. Loss of Potential revenue to the crown.
2. Lost economic opportunities - fibre could support the manufacture of other wood products (chips, pellets, post and rail etc.) that can generate revenue and employment.
3. Fire hazard near the urban interface.
4. Carbon emissions in an era of social awareness of climate change.
5. Air quality and human health.
6. Incineration of organic material and nutrients, with negative effects on site productivity
7. Loss of critical mature forest structure (snags and CWD) that is important in maintaining biodiversity.

• • •

Our Study

1. Quantify what's in the cullpiles.
 - pull them apart and sort
 - grade the sorted material
2. What else is left on the block following harvest?
 - dispersed wood sampling
3. How much “waste” material might be out there in the TSA?

14 Study Sites in the Thompson Okanagan Region



Methods



























Methods

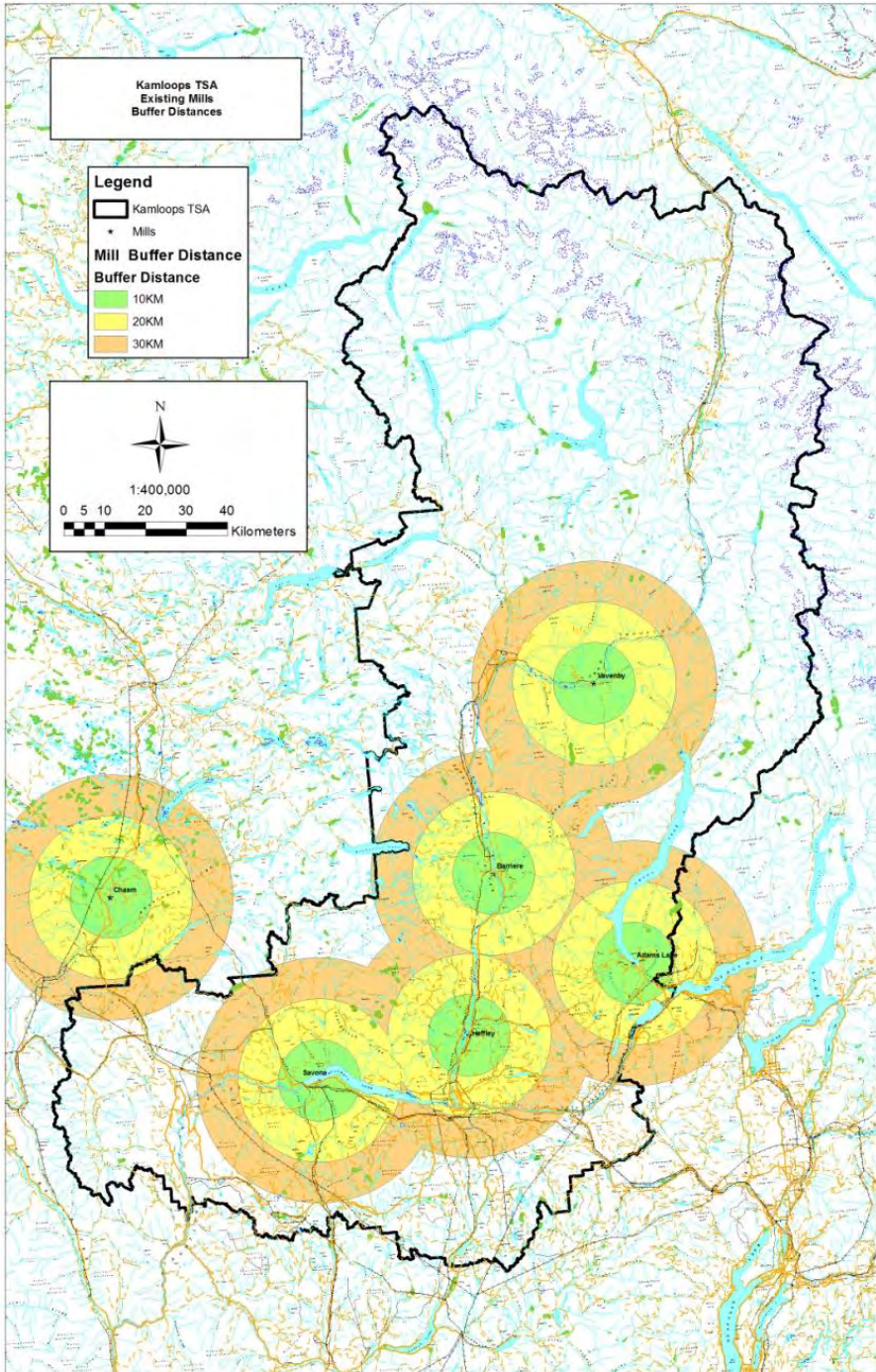
1. Quantify what's in the cullpiles.
 - pull them apart and sort
 - grade the sorted material
2. What else is left on the block?
 - dispersed wood sampling
3. How much “waste” material might be out there?





Methods

1. Quantify what's in the cullpiles.
 - pull them apart and sort
 - grade the sorted material
2. What else is left on the block?
 - dispersed wood sampling
3. How much “waste” material might be out there?



Kamloops TSA

The THLB ha \geq age 80
0-10, 10-20 and 20-30 km
from 6 mill locations

0-10 km 36,000 ha

10-20 km 106,000 ha

20-30 km 135,000 ha

275,000 ha x 40 m³ /ha
~~~11,000,000 m<sup>3</sup>



# ***Loss of Critical Wildlife Habitat***





# What Have We Learned?





# Some Preliminary Thoughts.....

1. What is left on a harvest block is determined by many factors including market conditions, timber supply, haul distance, timber type, crew experience, culture, etc.  
*- this is known as a “wicked” problem and one that requires insight, leadership, patience and incentive to change.*
2. A significant amount of the material in cull piles could be moved into existing markets.
3. Social license issues may dictate that the current status quo will not remain an option.



# Some Possible Solutions





# Some Possible Solutions





# Specialty Markets





# Acknowledgements

- The numerous contractors and operators who did the heavy lifting to pull the piles apart.
- Stacy Anderson, Pat Hoyle, Rick Sommer and Rick Ranger (FLNRO).
- Jim Thrower, Russ Walton, Graham MacGregor (FLNRO) and others who helped with sampling design and fieldwork.
- FLNRO Thompson – Okanagan Region for Funding.



# Questions ???

