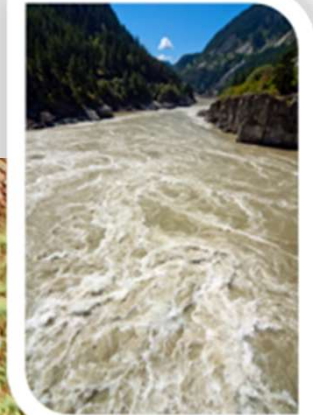
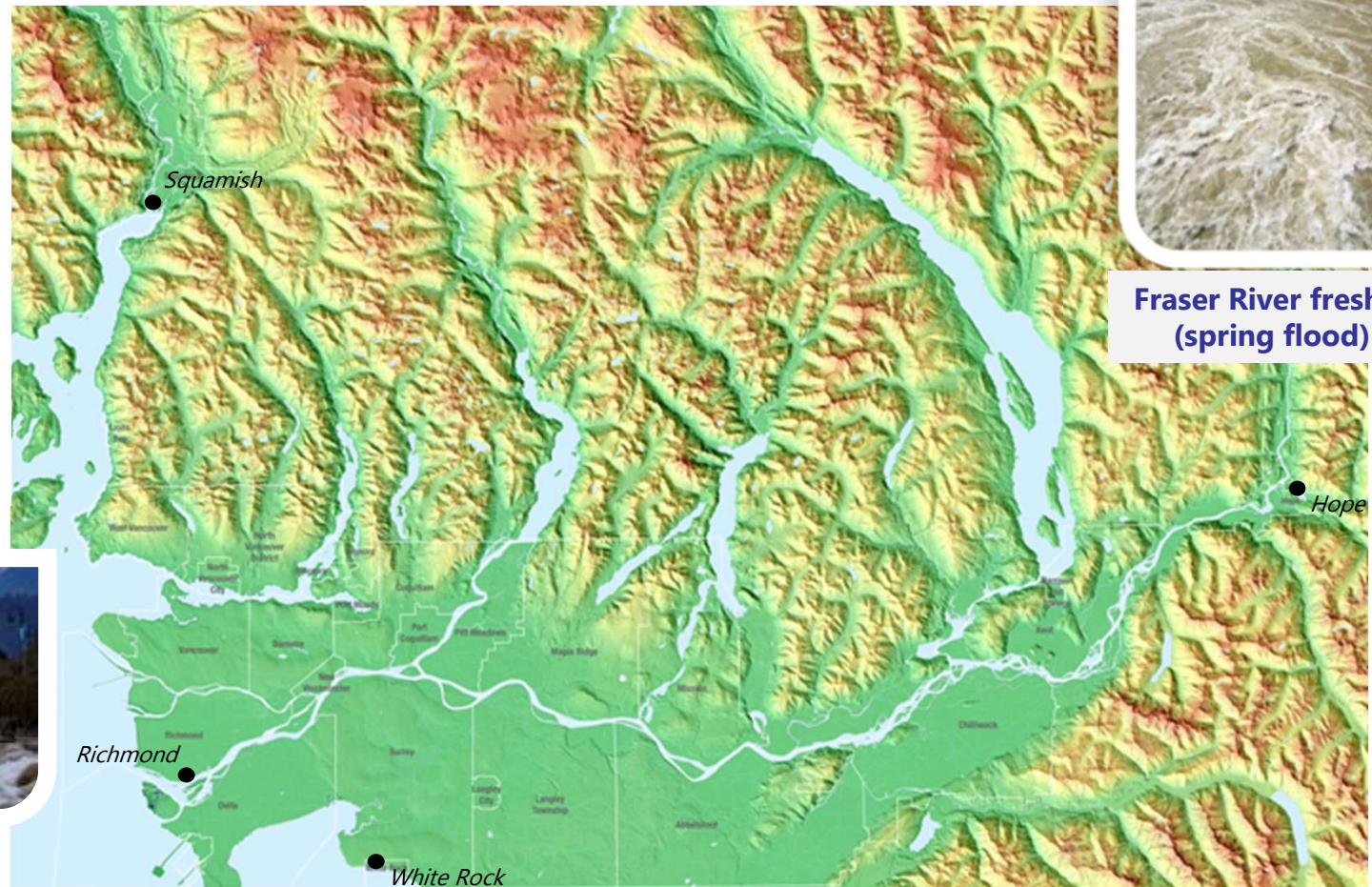


Lower Mainland Flood Management Strategy

Aims to reduce flood risk and increase resilience for communities along the Lower Fraser River and South Coast



**Fraser River freshet
(spring flood)**

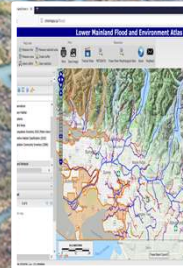


**Coastal storm surge
(winter flood)**

Integrating the Environment



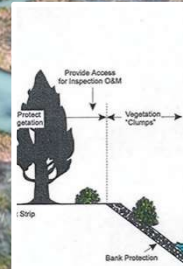
Convene Environmental Advisory Committee



Develop online atlas for flood and environmental features



Research environmentally sensitive approaches to flood mitigation



Clarify environmental regulatory processes



Learning events such as workshops and field tours