



Flood Protection for First Nation Communities



Brent Baron, P.Eng.

ISC - BC Region

brent.baron@canada.ca



The Structural Mitigation Program



Floodwall



Levee with Roadway



Floodwall



Levee with Roadway



Diversion



Dry Reservoir



Wetlands Restoration



Reservoir

Completes the
Emergency
Management Cycle



Discussions

- Working with Communities
 - Historical
 - Location
 - Limitations
 - Standards
 - Funding Constraints
 - Access to Existing Facilities
 - Connecting with Communities
- 
- A coastal scene with a boat on a rocky shore and a forested background. The boat is white with a red stripe and is beached on a rocky shore. The background is a dense forest of evergreen trees under a cloudy sky. The water is shallow and reflects the sky.

Working with the Communities

- Each community is unique
- There is a need to connect with each individual community
- Communities will have different protocol for engagement
- Challenges are similar to a small community, however the solutions could be different

Historical

- Communities were connected to the water but not necessarily next to the water
- Communities were not stationary
- Typically the communities avoided seasonal hazards



Location

- Present community layout inhibits the ability to adapt to the Environment



Standards

A Deere excavator is shown in the foreground, working on a construction site. The excavator is positioned on a pile of gravel or crushed stone. In the background, there is a large body of water, likely a lake or reservoir, and a range of mountains under a clear sky. The trees around the lake have autumn-colored foliage.

- Standards will vary when compared to provincial standards
- Some communities have a lower level of protection;
 - Affecting level of upgrades needed
 - Affecting when emergency levels are triggered
- Communities could require a more stringent upgrade
- May require a larger footprint of protection

Funding Constraints

- Federal Government has a limited funding base, with priority being improvements to water supply
- Would not rely on ISC being the main or only source of funding
- Funding is intended for protection of communities and existing infrastructure
- Funding would be provided only with support of the First Nation Community
- Funding is a tad more efficient; but the process could appear to be more daunting
- Funding could be more flexible,

Access to existing Facilities



- Access and right of ways were not formalized; dialogue is needed to resolve these situations
- Historical access could be associated with a lease that has lapsed
- Return the right of way to original condition



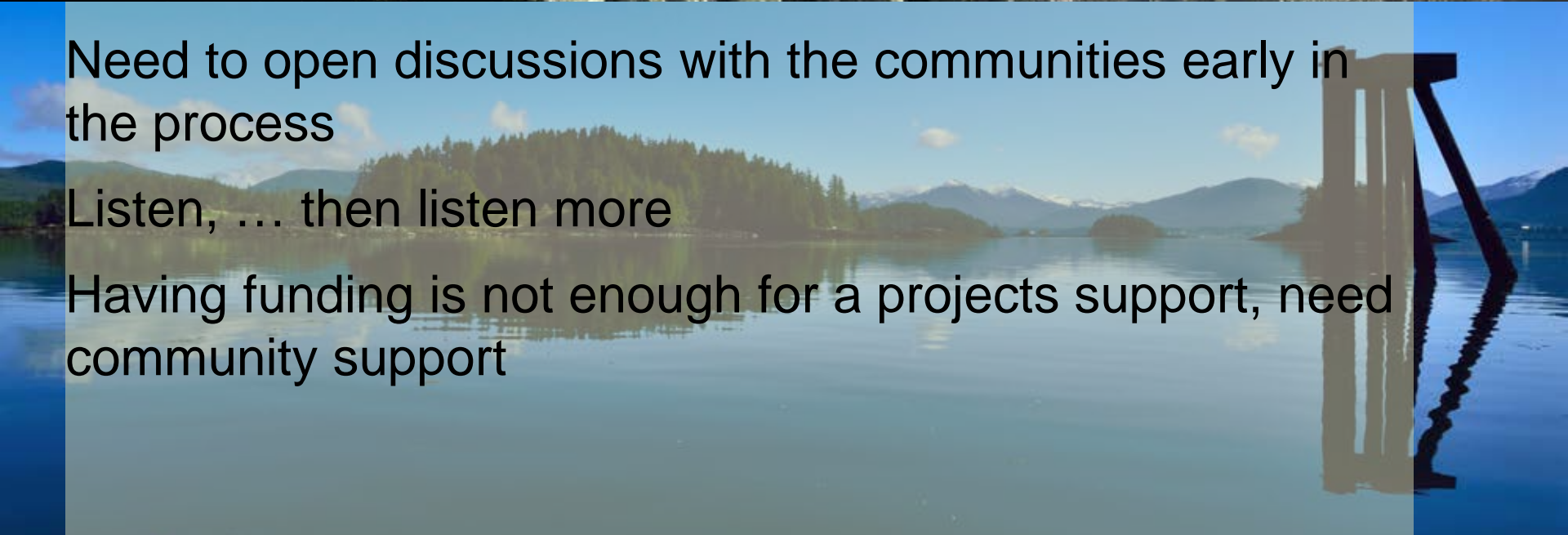
Reconnecting Communities



Need to open discussions with the communities early in the process

Listen, ... then listen more

Having funding is not enough for a projects support, need community support



Future





Questions?

Brent Baron, P.Eng.

ISC - BC Region

brent.baron@canada.ca

